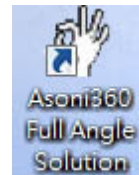


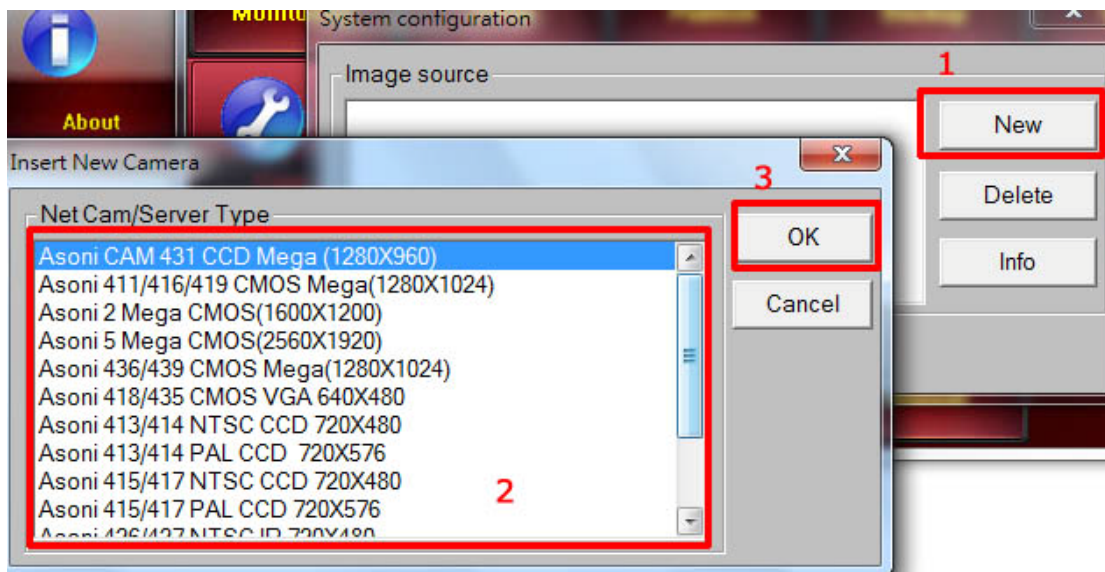
How to set Asoni360



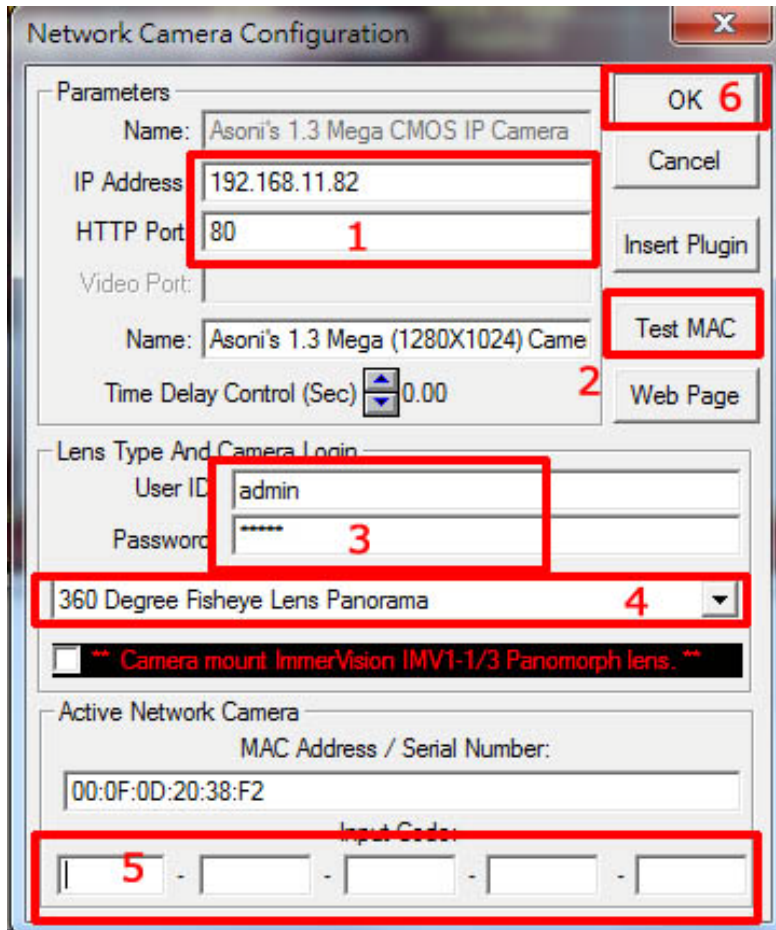
1. Install Asoni360 program.
2. Double click the Asoni360 icon on the desktop.
3. Double click "Camera Configuration".



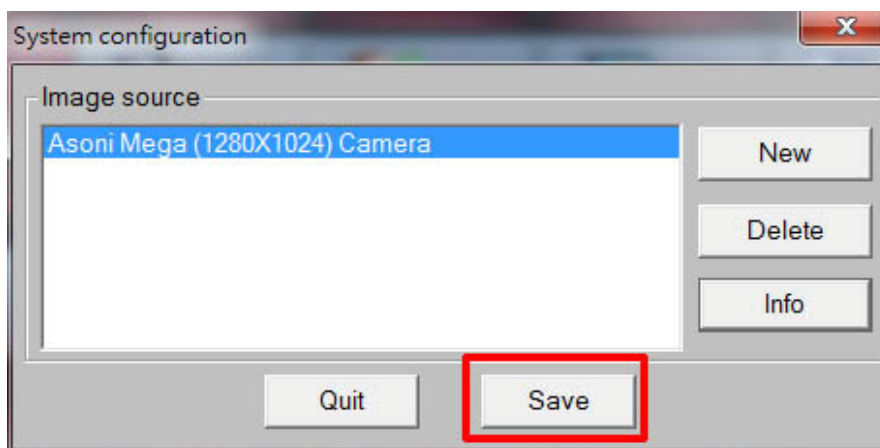
4. New → Choose your camera model → ok



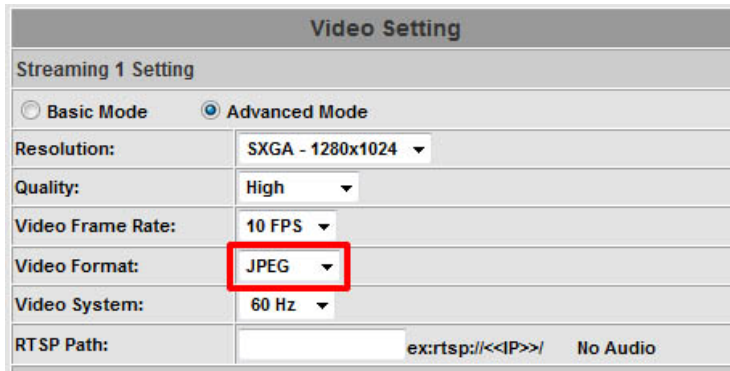
- 5-1. Type camera's IP and http port
- 5-2. Push "Test MAC" button, it will show the MAC address
- 5-3. Type camera's account and password
- 5-4. Choose which Asoni360 mode your want
- 5-5. Type the code
- 5-6. Push "OK" button



6. Push "Save" button



7. Please connect to the camera and adjust the video format to **JPEG**
(Configuration → Video/Audio → Video)



8. Double click "Start Monitoring" button



9. Configure → Make Alignment



10. Please adjust the image match to the red circle then push "OK" button.

