



## SOL6-Pro Professional Recording Software

**SOL6040/6090/6160/6360/6720**



- ▶ Provides 4CH/ 9CH/ 16CH/ 36CH/ 72CH versions
- ▶ Live view/ Record/ Playback/ IVS
- ▶ Supports major brands of camera
- ▶ Advanced intelligent video analyze
- ▶ Schedule/ Event/ Manual Recording
- ▶ Supports multiple monitors display

Asoni SOL6-Pro series is a professional network surveillance software, it can manage multiple IP cameras and video servers for live-view, record, playback, control, event notification and reaction. This software supports Asoni and the major brands of IP cameras and video servers, manages up to 72CH (SOL6720-Pro), 36CH (SOL6360-Pro), 16CH (SOL6160-Pro), 9CH (SOL6090-Pro) and 4CH (SOL6040-Pro) in a single Windows PC.

The new IVS (Intelligent Video Analyze) function provides various intelligent detections to enhance the event management capability, which increase the flexibility of handling different applications in many circumstances.

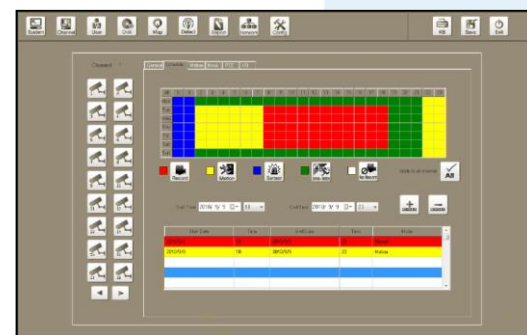
### Live View

- Supports Full-HD monitor, UI display resolution up to 1920x1080
- Multiple monitors display: 2 for live-view, 2 for E-Map and playback
- Various split windows viewing modes
- User-defined channel sequence and layout
- Auto/ Manual channel rotation
- Supports 2-way audio and audio broadcast
- PTZ control plus user-defined PTZ commands
- Supports digital zoom
- Channel, event and system status monitor



### Record

- Full-time, Schedule, Event and Manual recording
- Specific-schedule recording for special date/ time
- Pre/ Post event recording: Pre-alarm 10 sec / Post-alarm 60 sec
- Enable/ disable audio recording
- Multiple storages for recording
- Automatically overwrite when disk is full
- Independent recording database (by day), easily for backup and append





## SOL6-Pro Professional Recording Software

### Playback

- Multiple channels playback simultaneously
- Synchronized multiple channels playback
- Quickly select event video from event list
- Smart search recorded video by time list
- User-defined area to search event from the recorded video
- View and download the recorded video in camera's SD card
- Supports digital zoom
- Export recorded video as video clip or picture



### E-Map

- Multiple layers of maps, provides tree-list for select map easily
- Supports map-in-map function, easily monitors the status and switch the map
- Live-view and instant event notification
- Various icons for identify the channel, digital input and map
- Automatically play back event video
- Motion and alarm list for select and play the post event video
- Adjustable map size to fit the window



### Event & IVS (Intelligent Video Analyze) System

- Motion and digital input detection
- Advanced IVS function provides:
  - Missing object/ Foreign object detection
  - Occlusion/ Redirection/ Lose focus / Video loss detection
  - Counting object
- Various and multiple reaction when event is triggered:
  - Recording/ E-mail notification/ Play warning sound/ Pop-up video/ Go to preset point



### Server Function

- Remotely live-view, playback and configured by Remote Program
- Remotely live-view via IE browser by remote client
- Remotely live-view via RTSP connection via 3G mobile phone
- Export a portable program for viewing without installing software

### Supported Devices

- Supports Asoni IP cameras and video servers
- Supports major brands of IP camera and video servers
- Supports H.264/ MPEG4/ MJPEG video stream
- Supports multiple-streaming IP cameras and video servers

System Requirements (Minimum)					
Model	4CH	9CH	16CH	36CH	72CH
OS	Windows 7 / Vista / XP				
CPU	Intel® Core™ i3-2100 3.1GHz		Intel® Core™ i5-2500 3.3GHz		Intel® Core™ i7-2600 3.4GHz
RAM	2GB DDR3		4GB DDR3		4GB DDR3
VGA	On Board	Independent display card			