



NVR6-H series PC-based standalone NVR

NVR672H/636H/616H



- ▶ Provides 72CH/ 36CH/ 16CH versions
- ▶ Live view/ Record/ Playback/ IVS
- ▶ Simultaneously display all live-view channels of 2 Mega-pixel cameras in full frame rate
- ▶ Schedule/ Event/ Manual Recording
- ▶ Supports multiple monitors display
- ▶ Comply with Onvif standard
- ▶ Supports major brands of camera
- ▶ Free CMS for managing multiple remote servers

Asoni NVR6-H series is a network standalone NVR(Network Video Recorder), it can manage multiple IP cameras and video servers for live-view, record, playback, control, event notification and reaction.

NVR6-H series integrate high performance PC and unique software technology, manage up to 72CH (NVR672H), 36CH (NVR636H) and 16CH (NVR616H). **When the NVR is connected to Asoni H.264 2 Mega-pixel IP cameras, the NVR6-H series can simultaneously display all live-view channels (NVR672H: up to 72CH) with full frame rate on a single screen, and offers the best live-view performance in the market.** Besides, **NVR6-H series have already complied Onvif standard**, this makes NVR6-H series support all brands of IP camera which also comply with Onvif.

The IVS (Intelligent Video Surveillance) function provides various intelligent detections to enhance the event management capability, which increase the flexibility of handling different applications in many circumstances. With the free bundled CMS (Central Management Software), you can integrate multiple NVR6 series servers, which offer you the possibility to manage a large scale surveillance system, and live-view, playback, manage all cameras at the single platform.

Hardware Spec.	NVR672H	NVR636H	NVR616H
CPU	Intel® Core™ i7-2600 3.4GHz	Intel® Core™ i5-2500 3.3GHz	Intel® Core™ i3-2100 3.1GHz
RAM	4GB DDR3	4GB DDR3	2GB DDR3
Operating System	Windows 7 Home Premium		
Storage	SATAII HDD Connector x 6: System HDD x 1, Empty x 4, Empty (for internal or eSATA) x 1 eSATA Connector: Connect with external DAS (Direct Attached Storage), such as RAID		
LAN Port	1000BASE-T Gigabit Ethernet x 1		
Display Card	Independent display card/ 2 monitor outputs		
Simultaneously Recording Channels	Up to 72CH	Up to 36CH	Up to 16CH
Simultaneously Live-View Channels (with Asoni H.264 Camera)	Up to 72CH (1600x1200/15FPS/2Mbps)	Up to 36CH (1600x1200/15FPS/2Mbps)	Up to 16CH (1600x1200/15FPS/2Mbps)
Simultaneously Live-View Channels (with other brand H.264 Camera)	Up to 18CH (1600x1200/15FPS/2Mbps)	Up to 14CH (1600x1200/15FPS/2Mbps)	Up to 6CH (1600x1200/15FPS/2Mbps)
Dimension/ Weight	4U Case/ 450(W) x 483(D) x 177(H) mm/ 9Kg		
Temperature/ Humidity	0°C- +60°C (32°F-140°F)/ 10%-95% relative humidity, non-condensing		
Power	Input: 110-240V AC, 50/60Hz, Internal Power Supply: 350W		

Main Functions

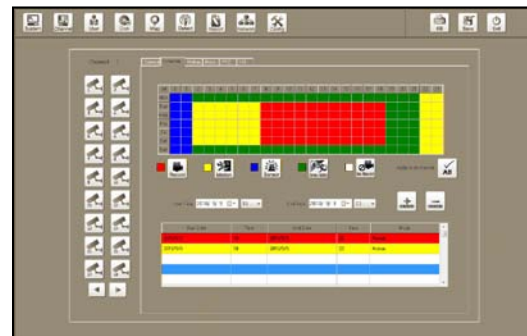
Live View

- UI display resolution up to 1920x1080
- Multiple monitors display: 2 for live-view, 2 for E-Map and playback
- Various split windows viewing modes
- User-defined channel sequence and layout
- Auto/ Manual channel rotation
- Supports 2-way audio and audio broadcast
- PTZ control plus user-defined PTZ commands
- Supports digital zoom
- Channel, event and system status monitor



Record

- Full-time, Schedule, Event and Manual recording
- Specific-schedule recording for special date/ time
- Pre/ Post event recording: Pre-alarm 10 sec / Post-alarm 60 sec
- Enable/ disable audio recording
- Multiple storages for recording
- Automatically overwrite when disk is full
- Independent recording database (by day), easily for backup and append



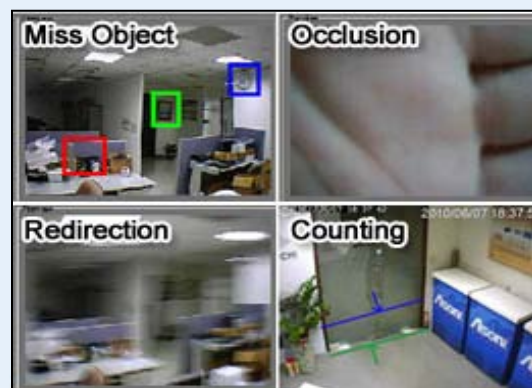
Playback

- Multiple channels playback simultaneously
- Synchronized multiple channels playback
- Quickly select event video from event list
- Smart search recorded video by time list
- User-defined area to search event from the recorded video
- View and download the recorded video in camera's SD card
- Supports digital zoom
- Export recorded video as video clip or picture



Event & IVS (Intelligent Video Analyze) System

- Motion and digital input detection (by camera itself)
- Advanced IVS function provides:
 - Missing object/ Foreign object detection / Motion detection
 - Occlusion/ Redirection/ Lose focus / Video loss detection
 - Counting object / Boundary detection /
- Various and multiple reaction when event is triggered:
 - Recording/ E-mail notification/ Play warning sound/ Pop-up video/
 - Go to preset point

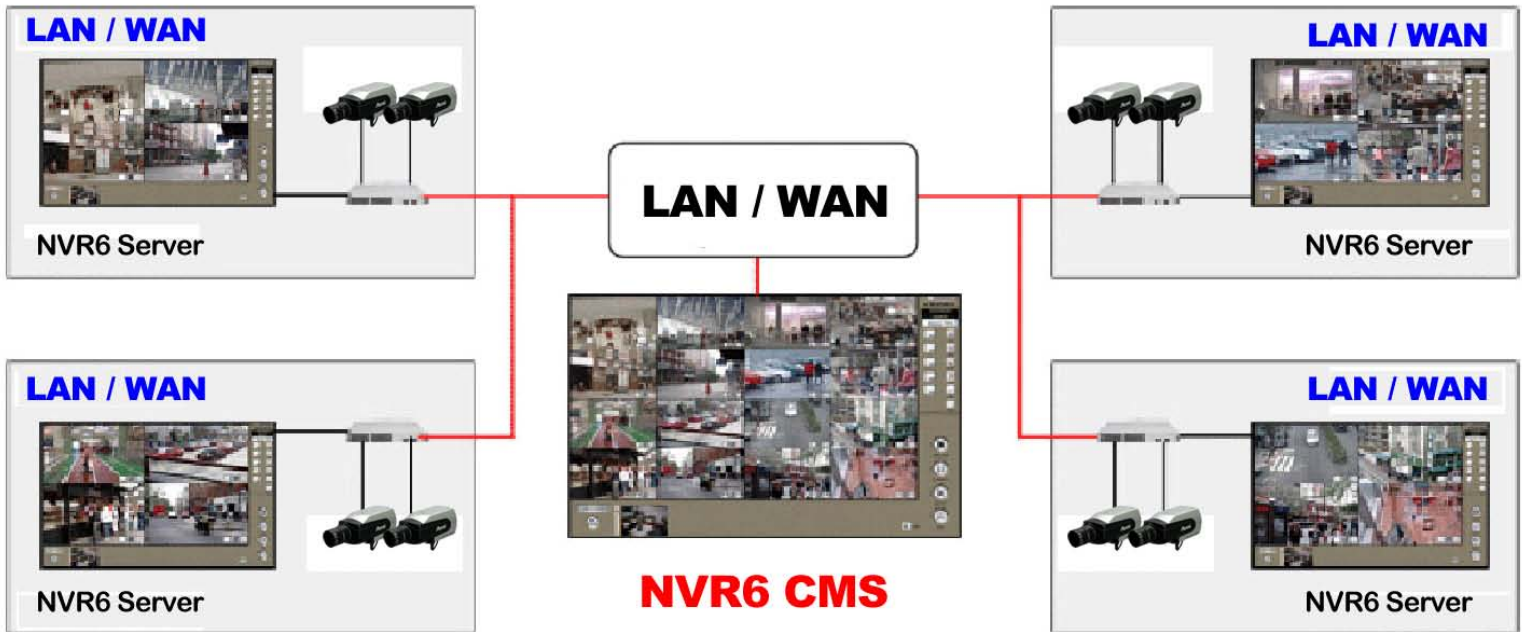


E-Map

- Multiple layers of maps, provides tree-list for select map easily
- Supports map-in-map function, easily monitors the status and switch the map
- Live-view and instant event notification
- Various icons for identify the channel, digital input and map
- Automatically play back event video
- Motion and alarm list for select and play the post event video

Remote Functions

- NVR6-CMS: Live view, playback, fully control
- Remote program: Live view, playback, fully control
- IE browser: Live view
- 3G mobile phone: Live view via RTSP connection
- Export a portable program for viewing



To build a large scale surveillance system, you can use the free bundled NVR6-CMS to integrate multiple NVR6 servers through Intranet or Internet, which offers you to live-view, playback, control all cameras and manage the NVR6 servers in a single Windows PC

Live View

- Supports Full-HD monitor, UI display resolution up to 1920x1080
- User-defined channel groups for live-view, allows mixed cameras from different NVR6 servers
- Live-view with selected channel group, up to 64 channels per group
- Supports digital zoom and PTZ control
- Various split windows viewing modes
- Auto/ Manual channel rotation
- Channel and event status monitor

Playback

- Play back the recorded video from the connected NVR6 servers
- Easily search recorded video by time list
- Quickly select event video from event list
- Supports digital zoom
- Export recorded video as video clip or picture

E-Map

- Multiple layers of maps, provides tree-list for select map easily
- Live-view and instant event notification
- Motion and alarm list for select and play the post event video

Management

- Configures all settings of NVR6 servers and updates immediately
- Monitors the status of NVR6 servers, including System resource, Transfer bit rate and Counting result

