



NVR6 series PC-based standalone NVR

NVR604/609/616/636



- ▶ Provides 4CH/ 9CH/ 16CH/ 36CH versions
- ▶ Live view/ Record/ Playback/ IVS
- ▶ Free CMS for managing multiple remote servers
- ▶ Supports major brands of camera
- ▶ Advanced intelligent video analyze
- ▶ Schedule/ Event/ Manual Recording
- ▶ Supports multiple monitors display
- ▶ Extendable storage capacity by eSATA

Asoni NVR6 series is a network standalone NVR(Network Video Recorder), it can manage multiple IP cameras and video servers for live-view, record, playback, control, event notification and reaction. **NVR6 series have already complied ONVIF**, it can support many brands of IP cameras which also comply ONVIF. NVR6 series can manage up to 36CH (NVR636), 16CH (NVR616), 9CH (NVR609) and 4CH (NVR604).

The new IVS (Intelligent Video Surveillance) function provides various intelligent detections to enhance the event management capability, which increase the flexibility of handling different applications in many circumstances. With the free bundled CMS (Central Management Software), you can integrate multiple NVR6 series servers, which offer you the possibility to manage a large scale surveillance system, and live-view, playback, manage all cameras at the single platform.

Hardware Spec.

| | NVR604 | NVR609 | NVR616 | NVR636 |
|--------------------|----------------------------------------------------------|-------------------------------------|----------------------------------|---------------------------------|
| CPU | Intel® Atom™ Processor D410 1.66GHz | Intel® Atom™ Processor D510 1.66GHz | Intel® Core™ i3-530 2.93GHz / 4M | Intel® Core™ i5-760 2.8GHz / 8M |
| RAM | 1G DDRII RAM | 1G DDRII RAM | 2G DDR3 1333 (Dual Channels) | 2G DDR3 1333 (Dual Channels) |
| OS | Windows XP Embedded | | | |
| Storage | HDD slot x 4 (Max. 5 units) / eSATA and DVD are optional | | | |
| LAN port | 1000BASE-T Gigabit x 2 | | | |
| USB port | USB x 2 (Front side) | | | |
| Dimension | 436mm x 426mm x 164mm | | | |
| Weight | 9KG | | | |
| Temperature | 0°C-+60°C (32°F-140°F) | | | |
| Humidity | 10%-95% relative humidity, non-condensing | | | |
| Power | Input: 110-240V AC, 50/60Hz, Internal Power Supply: 400W | | | |
| Accessory | Bracket x 2 (optional) | | | |

Main Functions

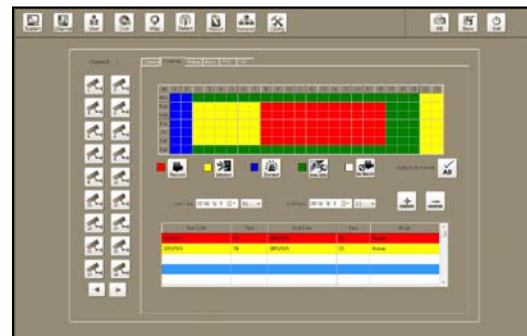
Live View

- Multiple monitors display: 2 for live-view, 2 for E-Map and playback
- Various split windows viewing modes
- User-defined channel sequence and layout
- Auto/ Manual channel rotation
- Supports 2-way audio and audio broadcast
- PTZ control plus user-defined PTZ commands
- Supports digital zoom
- Channel, event and system status monitor



Record

- Full-time, Schedule, Event and Manual recording
- Specific-schedule recording for special date/ time
- Pre/ Post event recording: Pre-alarm 10 sec / Post-alarm 60 sec
- Enable/ disable audio recording
- Multiple storages for recording
- Automatically overwrite when disk is full
- Independent recording database (by day), easily for backup and append



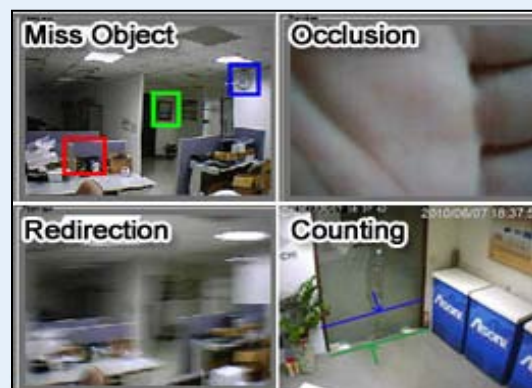
Playback

- Multiple channels playback simultaneously
- Synchronized multiple channels playback
- Quickly select event video from event list
- Smart search recorded video by time list
- User-defined area to search event from the recorded video
- View and download the recorded video in camera's SD card
- Supports digital zoom
- Export recorded video as video clip or picture



Event & IVS (Intelligent Video Analyze) System

- Motion and digital input detection
- Advanced IVS function provides:
 - Missing object/ Foreign object detection / Motion detection
 - Occlusion/ Redirection/ Lose focus / Video loss detection
 - Counting object / Boundary detection /
- Various and multiple reaction when event is triggered:
 - Recording/ E-mail notification/ Play warning sound/ Pop-up video/
 - Go to preset point

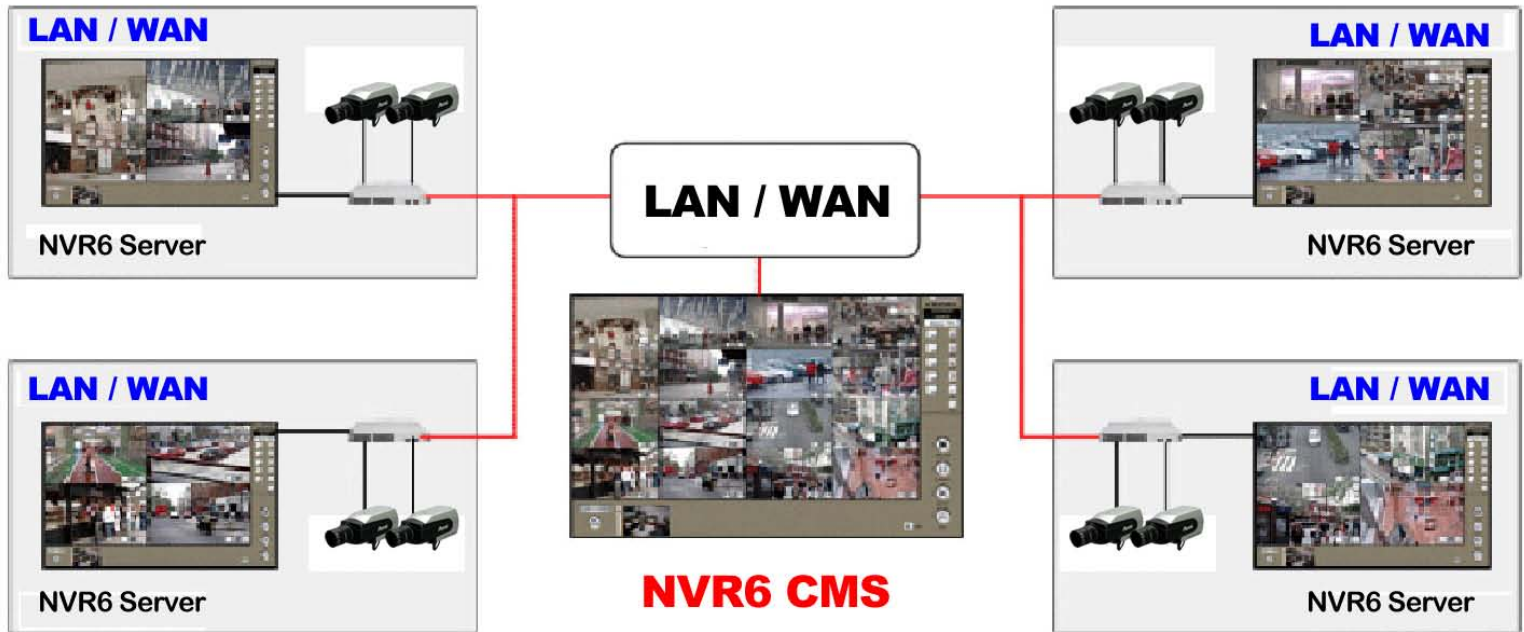


E-Map

- Multiple layers of maps, provides tree-list for select map easily
- Supports map-in-map function, easily monitors the status and switch the map
- Live-view and instant event notification
- Various icons for identify the channel, digital input and map
- Automatically play back event video
- Motion and alarm list for select and play the post event video

Remote Functions

- SOL-CMS: Live view, playback, fully control
- Remote program: Live view, playback, fully control
- IE browser: Live view
- 3G mobile phone: Live view via RTSP connection
- Export a portable program for viewing



To build a large scale surveillance system, you can use the free bundled NVR6-CMS to integrate multiple NVR6 servers through Intranet or Internet, which offers you to live-view, playback, control all cameras and manage the NVR6 servers in a single Windows PC

Live View

- Supports Full-HD monitor, UI display resolution up to 1920x1080
- User-defined channel groups for live-view, allows mixed cameras from different NVR6 servers
- Live-view with selected channel group, up to 64 channels per group
- Supports digital zoom and PTZ control
- Various split windows viewing modes
- Auto/ Manual channel rotation
- Channel and event status monitor

Playback

- Play back the recorded video from the connected NVR6 servers
- Easily search recorded video by time list
- Quickly select event video from event list
- Supports digital zoom
- Export recorded video as video clip or picture

Management

- Configures all settings of NVR6 servers and updates immediately
- Monitors the status of NVR6 servers, including System resource, Transfer bit rate and Counting result

