



16 / 8CH Network Video Recorder

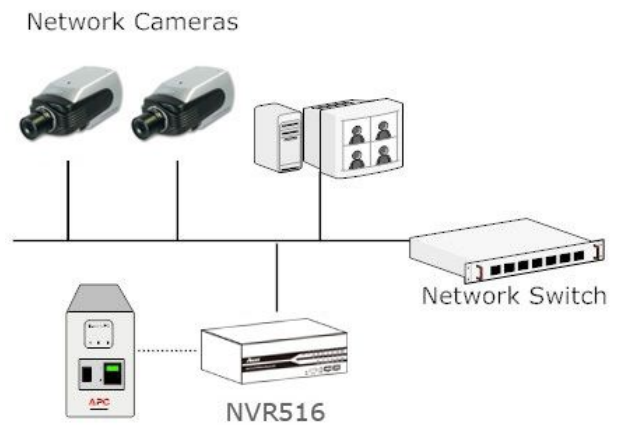
NVR516 / NVR508



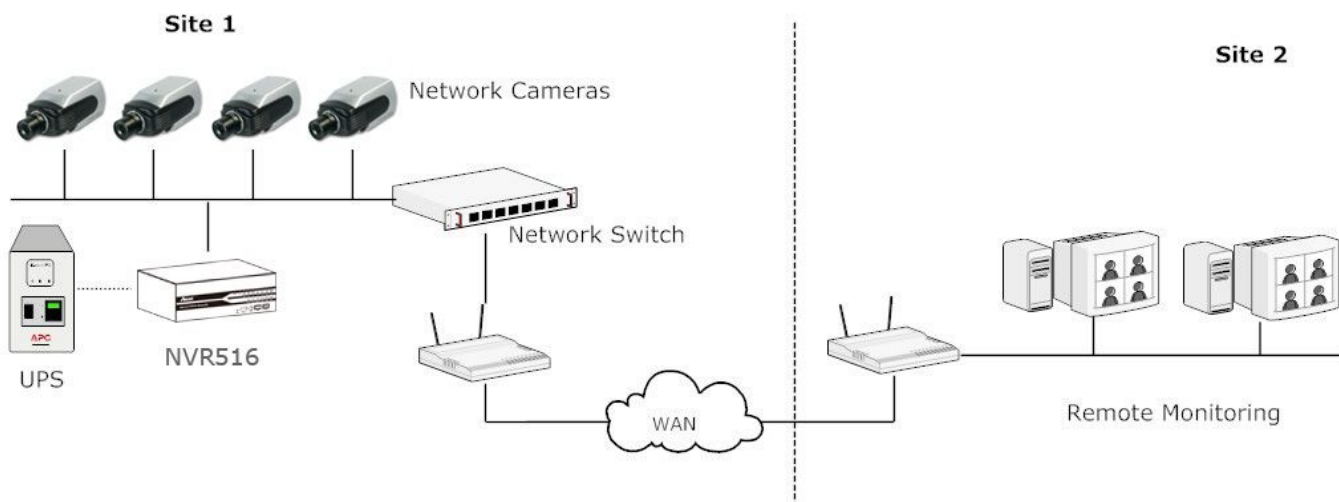
- ▶ Linux-embedded Standalone Recorder
- ▶ Manage up to 16 / 8 Network Cameras
- ▶ Up to 480FPS@Full-D1 Video Recording
- ▶ High Quality Live/Playback Video
- ▶ Various Types of Event Alerts
- ▶ Pure Web Based Administration
- ▶ Multiple User Level Access Control
- ▶ Free 256CH CMS Software

Asoni NVR can be quickly and easily configured into your existing local IP network along with the network cameras. Users can control, record, and view live videos right through a web browser from another PC on the network.

Asoni NVR is compatible with most major brand cameras and its ability to automatically search and find the available cameras on the network can greatly reduce the user effort when expanding the system.



When you are on the road or travel away from your home or office, Asoni NVR gives you the same level of user experience as you are inside your home or office network. Asoni NVR is supported by FREE CMS software which can manage up to 16 units of NVR, maximum 256 channels. Asoni NVR + Central Basic adopt intelligent motion detection feature which applies pixel by pixel calculation technique. During playback mode, the event preview videos can help you to select motion recording files very quickly, easily and intuitively.



Hardware Specification

CPU and Memory

- ▶ ARM9 500Mhz / 128MB DDR RAM

Ethernet

- ▶ 10BaseT / 100BaseT / 1000BaseT and half duplex / full duplex auto-negotiation

HDD

- ▶ SATA HDD Slot x 2 (SATA I or SATA II)
- ▶ Max. Capacity: 3TB (1.5TB per HDD)

LED

- ▶ Cameras / Power / System / Network / HD / Alarm

Buttons

- ▶ Reset / Power / Buzzer

Connectors

- ▶ USB x 2
- ▶ DI / DO Connectors
- ▶ RS-485
- ▶ RS-232

Power

- ▶ AC 100 ~ 240V, Power consumption: 90W

Dimensions

- ▶ 243 x 218 x 72 mm

Weight

- ▶ 10 lbs / 4.5 Kg

Temperature

- ▶ Operating: 5 °C ~ 45 °C / 41 °F ~ 113 °F
- ▶ Storage: -40 °C ~ 70 °C / -14 °F ~ 158 °F

Humidity

- ▶ 5% ~ 90% (non condensing)

Safety

- ▶ FCC Class B / CE / UL

Software Specification

Cameras

Model	Asoni, Axis, Panasonic, Sony Cameras
Add Camera	Manual / Smart Camera Search
Max. Channels	NVR516: 16CH / NVR508: 8CH

Central Management

Central Management	Support Asoni NVR Central Management Software (CMS)
---------------------------	---

Video

Compression	MJPEG / MPEG-4 Part 2 / H.264
Resolution	MegaPixel / Full-D1 / CIF / QCIF, or depends on camera
Max. Frame Rate	NVR516: 480fps / NVR508: 240fps (Full-D1)

Live View

Display Mod	Live View / Playback / Full Screen
Split Screen	1 / 4 / 16
Full Screen	NVR516: 16 videos / NVR508: 8 videos
PTZ Support	Virtual PTZ Panel / Auto Pan / Preset Point / Preset Sequence
Sequence Mode	Sequence All / Manually Selected cameras in 1 or 4 split view with configurable timer
Snapshot	Video snapshot in JPEG format

Playback

Split Screen	1 / 4
Search Method	Time / Date, Event
Playback Controls	Play / Pause / Stop / Forward / Reverse / Speed Adjust / Frame by Frame

Recording

Capacity	Depends on hard disk
Recording Mode	Manual / Continuous / Scheduling / Event
Scheduling Types	Manual Select / Day Mode / Night Mode / Weekend Mode

Network

Protocols	HTTP/SMTP/DHCP/ARP/NTP/DNS/ UPnP/FTP
Streaming Protocol	Depend on the supported cameras

User Management

Management	User / Group
Group Numbers	7 (Administrator / Guest / User Define x 5)
Privileges	Live View / Playback / System Configurations / Camera Configurations / Recording Configuration / Event Configuration / Maintenance

Triggers & Events

Events	System Events -- System Start / Shutdown, System Settings modified, Camera Settings Modified, Start Recycle, Disk Full Camera Events -- Motion/Sensor Detection
Event Actions	HTTP / Mail / FTP / Buzzer / Record
Event Recording	Pre / Post Event Settings

Logs

Log Type	Alert / Event / User Access
-----------------	-----------------------------

System

Minimal Requirements	CPU: Intel Pentium 4 or higher @ 2Ghz RAM: 1GB or above Network: 100M Network Interface or above IE Browser version 6 or above
-----------------------------	---

General

Languages	English/Chinese/Japanese/Spanish/Italian
Packaging	NVR (HD NOT included) / CD with Software tool / AC Power Cord