



## 16 Network Video Recorder

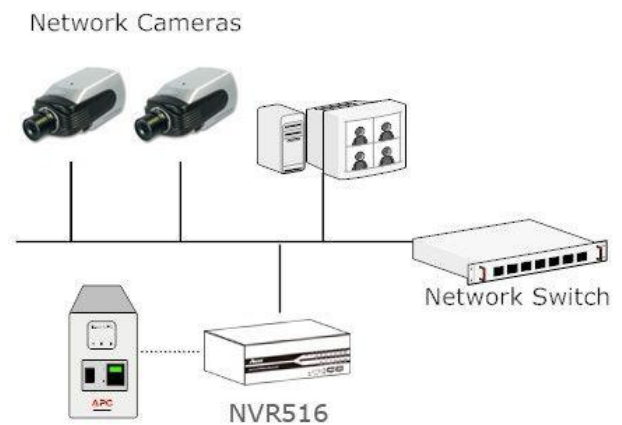
# NVR516E



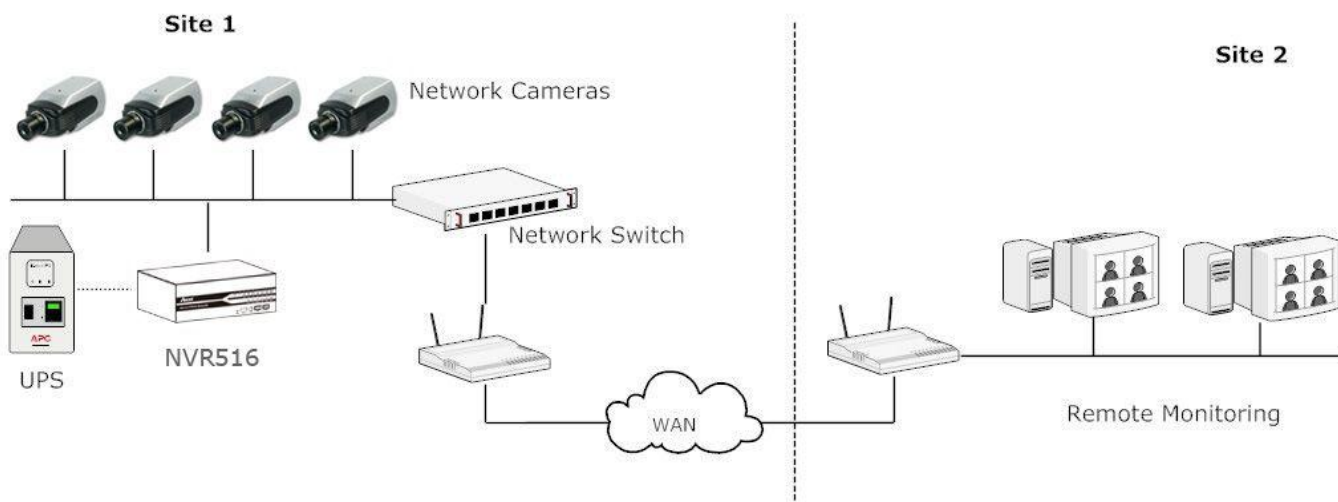
- ▶ Linux-embedded Standalone Recorder
- ▶ Manage up to 16 IP Cameras
- ▶ Up to 480FPS@Full-D1 Video Recording
- ▶ High Quality Live/Playback Video
- ▶ Support external storage device by eSATA
- ▶ Pure Web Based Administration
- ▶ Multiple User Level Access Control
- ▶ Free 256CH CMS Software

Asoni NVR516E can be quickly and easily configured into your existing local IP network along with the network cameras. Users can control, record, and view live videos right through a web browser from another PC on the network.

Asoni NVR516E is compatible with most major brand cameras and its ability to automatically search and find the available cameras on the network can greatly reduce the user effort when expanding the system. Besides, it support eSATA external storage device, total capacity up to 10TB, you can save more data.



When you are on the road or travel away from your home or office, Asoni NVR gives you the same level of user experience as you are inside your home or office network. Asoni NVR is supported by FREE CMS software which can manage up to 16 units of NVR, maximum 256 channels. Asoni NVR + Central Basic adopt intelligent motion detection feature which applies pixel by pixel calculation technique. During playback mode, the event preview videos can help you to select motion recording files very quickly, easily and intuitively.



## Hardware Specification

### CPU and Memory

- ▶ ARM9 500Mhz / 128MB DDR RAM

### Ethernet

- ▶ 10BaseT / 100BaseT / 1000BaseT and half duplex / full duplex auto-negotiation

### HDD

- ▶ SATA HDD Slot x 2 (SATA I or SATA II) / eSATA x 1
- ▶ Max. Capacity: 4TB (2TB per HDD)
- ▶ Max. Capacity: 10TB (2TB from HD / 8TB from eSATA)

### Buttons

- ▶ Reset / Power / Buzzer

### Connectors

- ▶ USB x 2
- ▶ DI / DO Connectors
- ▶ RS-485 / RS-232
- ▶ eSATA X 1

### Power

- ▶ AC 100 ~ 240V, Power consumption: 90W

### Dimensions

- ▶ 243 x 218 x 72 mm

### Weight

- ▶ 10 lbs / 4.5 Kg

### Temperature

- ▶ Operating: 5 °C ~ 45 °C / 41 °F ~ 113 °F
- ▶ Storage: -40 °C ~ 70 °C / -14 °F ~ 158 °F

### Humidity

- ▶ 5% ~ 90% (non condensing)

### Safety

- ▶ FCC Class B / CE / UL

## Software Specification

### Cameras

<b>Model</b>	Asoni, Axis, Panasonic, Sony Cameras
<b>Add Camera</b>	Manual / Smart Camera Search
<b>Max. Channels</b>	16CH

### Central Management

<b>Central Management</b>	Support Asoni NVR Central Management Software (CMS)
---------------------------	---

### Video

<b>Compression</b>	MJPEG / MPEG-4 Part 2 / H.264
<b>Resolution</b>	MegaPixel / Full-D1 / CIF / QCIF, or depends on camera
<b>Max. Frame Rate</b>	NVR516: 480fps (Full-D1)

### Live View

<b>Display Mod</b>	Live View / Playback / Full Screen
<b>Split Screen</b>	1 / 4 / 16
<b>Full Screen</b>	16 videos
<b>PTZ Support</b>	Virtual PTZ Panel / Auto Pan / Preset Point / Preset Sequence
<b>Sequence Mode</b>	Sequence All / Manually Selected cameras in 1 or 4 split view with configurable timer
<b>Snapshot</b>	Video snapshot in JPEG format

### Playback

<b>Split Screen</b>	1 / 4
<b>Search Method</b>	Time / Date, Event
<b>Playback Controls</b>	Play / Pause / Stop / Forward / Reverse / Speed Adjust / Frame by Frame

### Recording

<b>Capacity</b>	Depends on hard disk
<b>Recording Mode</b>	Manual / Continuous / Scheduling / Event
<b>Scheduling Types</b>	Manual Select / Day Mode / Night Mode / Weekend Mode

### Network

<b>Protocols</b>	HTTP/SMTP/DHCP/ARP/NTP/DNS/ UPnP/FTP
<b>Streaming Protocol</b>	Depend on the supported cameras

### User Management

<b>Management</b>	User / Group
<b>Group Numbers</b>	7 (Administrator / Guest / User Define x 5)
<b>Privileges</b>	Live View / Playback / System Configurations / Camera Configurations / Recording Configuration / Event Configuration / Maintenance

### Triggers & Events

<b>Events</b>	System Events -- System Start / Shutdown, System Settings modified, Camera Settings Modified, Start Recycle, Disk Full Camera Events -- Motion/Sensor Detection
<b>Event Actions</b>	HTTP / Mail / FTP / Buzzer / Record
<b>Event Recording</b>	Pre / Post Event Settings

### Logs

<b>Log Type</b>	Alert / Event / User Access
-----------------	-----------------------------

### System

<b>Minimal Requirements</b>	CPU: Intel Pentium 4 or higher @ 2Ghz RAM: 1GB or above Network: 100M Network Interface or above IE Browser version 6 or above
-----------------------------	---

### General

<b>Languages</b>	English/Chinese/Japanese/Spanish/Italian
<b>Packaging</b>	NVR (HD NOT included) / CD with Software tool / AC Power Cord



## Asoni Central Basic



- ▶ Free CMS software, support up to 16 NVRs (256 Channels )
- ▶ PC based software for managing NVR
- ▶ Various split-window for multiple channels
- ▶ Event notification and auto playback
- ▶ Support 5 monitors for managing multi-task
- ▶ Smart motion detection
- ▶ Picture-in-picture E-Map Monitor

**Asoni Central Basic** is the central management solution designed specifically for Asoni NVR Network Video Recorder, adding the scalability for NVR to fulfill applications ranging from small to larger businesses' environments. It also adds value to NVR with advance functions such as multi-display management, E-Map Monitor, and motion detection, making the NVR Network Video Recorder a truly valuable surveillance solution for most applications.

### Asoni NVR + Central Basic

- ▶ Free CMS software - Asoni Central Basic support up to 16 units NVR516E (256 Channels)
- ▶ PC based software for managing NVRs, including live view, playback and event monitor
- ▶ Various split-window for view multiple channels
- ▶ Instant event notification and automatic playback
- ▶ Support multi-screens up to 5 monitors for managing multi-task and multi-function
- ▶ Smart motion detection to enhance the detection ability of camera
- ▶ Mouse-over-video PTZ control
- ▶ Picture-in-picture E-Map Monitor
- ▶ Flexible video screen assignment
- ▶ Compatible with Major Brand Cameras
- ▶ Support H.264

## Feature Highlights

<b>256 CH</b>	Asoni Central Basic can manage a total of 16 Asoni NVR516E Network Video Recorders. Each NVR516E is capable of connecting 16 network cameras. With Asoni Central Basic, a whopping 256 cameras can be managed from a single PC at one central location.
<b>Motion Detection</b>	Asoni NVR516/E Network Video Recorder does not come with built-in motion detection function. However, with Asoni Central Basic installed on the management PC, motions can be detected and objects moving in the video will be highlighted for easier identification.
<b>Mouse-over-Video PTZ</b>	Asoni Central Basic provides the “Mouse-over-video” PTZ for a more intuitive PTZ control. Simply hover your mouse cursor onto the video and click anywhere within it to point the camera to that position.
<b>H.264</b>	Both Asoni Central Basic and NVR516E supports the latest video compression technology allowing you to gain the maximum video quality while keeping your network bandwidth sufficient for other applications.
<b>Multi-Monitor</b>	Asoni Central Basic provides multi-screen management allowing users to multi-task with multiple functions on different monitors.
<b>Auto Detect</b>	Asoni Central Basic can automatically detect any new NVR516E that’s been added onto the local area network. This allows users to add additional NVR without knowing its current IP address that helps reduce the management overhead.
<b>Advance E-Map</b>	Asoni Central Basic’s dual layer E-Map gives users a clear overview of where NVR516E and their cameras are located. The top layer displays the locations of each NVR516E and the sub-layer displays camera locations. Both layers provide on-the-fly instant notifications with videos displayed whenever there is an event trigger.

## Technical Specifications

### Device

<b>Supported Device</b>	16 x NVR516E Network Video Recorders
<b>Max. Channels</b>	256 (NVR516E)

### Video

<b>Compression</b>	MJPEG / MPEG-4 / H.264
<b>Resolution</b>	MegaPixel / Full-D1 / CIF / QCIF
<b>Max. Frame Rate</b>	25 / 30 Full-D1 (Configurable)

### Audio

<b>Streaming</b>	One-way
<b>Compression</b>	G.711 / G.726 (* G.726 on supported Panasonic Models only)

### Live View

<b>Multi-Monitor</b>	Up to five monitors can be automatically detected for viewing different function windows simultaneously
<b>Display Mode</b>	Live View / E-Map View / Event Monitor / Playback / Full Screen x 2
<b>Split Screen Pattern</b>	1 / 4 / 6 / 9 / 13 / 16 User self-define patterns
<b>Display Mode Full Screen</b>	16 videos
<b>PTZ Controls</b>	Pan / Tilt / Zoom / IRIS / Focus / Speed Control
<b>PTZ Functions</b>	Virtual PTZ Panel / Mouse-over-video PTZ / Auto Pan / Preset Point
<b>Sequence Mode</b>	Sequence All / Manually Selected cameras in 1/4/6/9 split view / Self-define patterns with configurable timer
<b>E-Map Monitor Snapshot</b>	Dual Layer E-Map Display (main map and its sub-maps) Live videos display on map Single / Continuous snapshot in JPEG format
<b>Motion Display</b>	Edge Paint / Matrix Highlight / ROI

### Network

<b>Protocols</b>	TCP/UDP/HTTP/FTP/SMTP/DHCP/DNS/ARP/ICMP/NTP/UPnP/RTP/RTSP/RTCP
------------------	--

### E-Map Monitor

<b>Display</b>	PIP Video Integrated on E-Map
<b>Event trigger</b>	Pop-up video displayed on the map

### Playback

<b>Split Screen</b>	1/4
<b>Search Methods</b>	Time / Date, Event (thumbnails)
<b>Event Search</b>	All / Time / Channel / Event Type / Event ID
<b>Playback Control</b>	Play / Pause / Stop / Forward (Speed adjustable) / Reverse (Speed Adjustable) / Frame by Frame / Event By Event

### Triggers & Events

<b>Motion Detection</b>	Smart Motion Detection/NVR Digital input & output
<b>Motion Display Event Detection</b>	Edge Paint / Matrix Highlight / ROI Motion / Digital input & output / NVR508/516 System Status / Camera Status
<b>Event Notifications</b>	On-Screen Alert / On-screen Motion Display / Mail / FTP / Configurable Alert Sound / Record

### Status

<b>Camera Status</b>	Disconnected / Connected / Recording / Event (Motion or sensor)
<b>System Info</b>	System Time / Login Users / System Logout / Network Bandwidth
<b>Motion Display</b>	Edge Paint / Matrix Highlight / ROI

### Systems

<b>Minimum Requirements</b>	<b>CPU:</b> Intel Pentium 4 or higher @ 2Ghz <b>RAM:</b> Minimum 1GB, 2GB or above is recommended <b>Graphic Card:</b> Independent graphic card with DirectX9.0c or higher <b>Network:</b> 100 Megabit Network Interface or above <b>OS:</b> Windows XP, Vista, Windows 7
-----------------------------	---

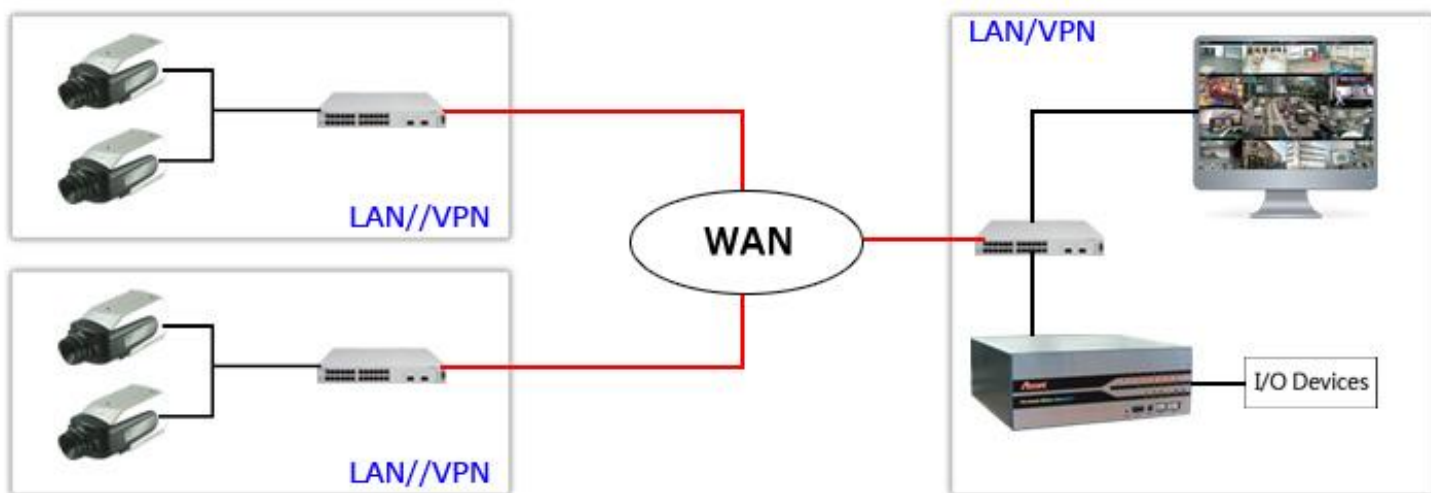
### General

<b>Languages</b>	English / Trad. Chinese / Simp. Chinese / Japanese / Spanish
<b>Documents</b>	CD with quick guide and user's manual

## Small



## Medium



## Large

