



4CH Network Video Recorder

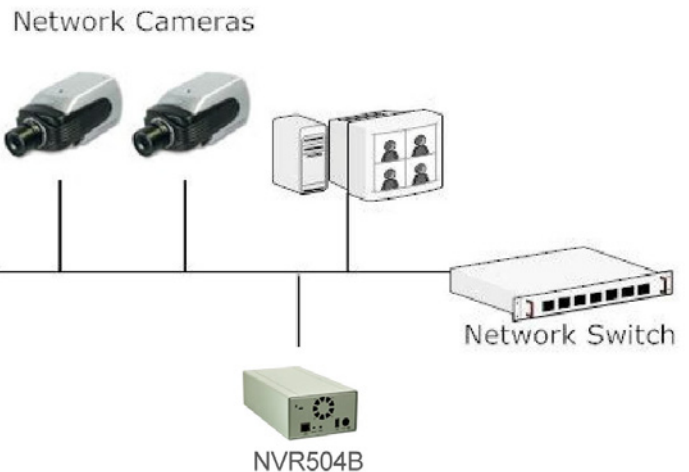
NVR504B



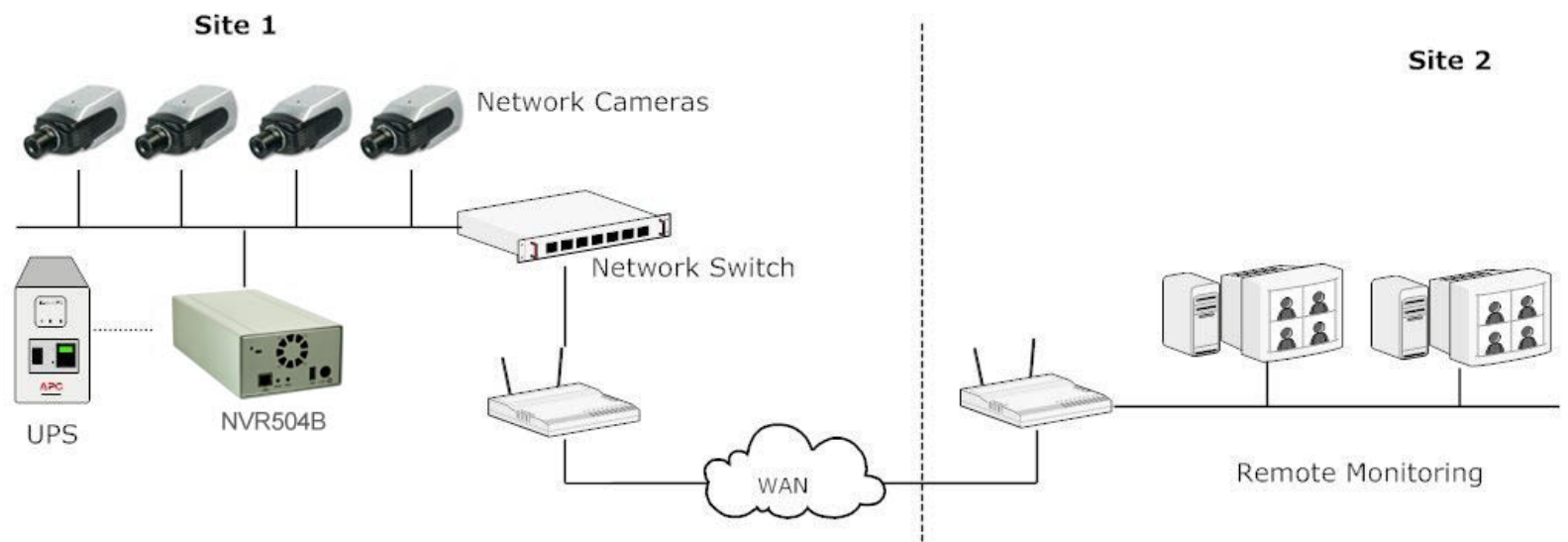
- ▶ Manage up to 4 IP Cameras
- ▶ Compatible with major brand cameras
- ▶ Up to 120FPS@H.264
- ▶ High Quality Live/Playback Video
- ▶ Various Types of Event Alerts
- ▶ 3GPP for monitoring via 3G mobile phone
- ▶ Multiple User Level Access Control
- ▶ Pure Web Based Administration

Asoni NVR504B is designed for small scale applications such as retail store. Up to 4 IP cameras can be connected via a network and it is possible to record their camera pictures. Asoni NVR504B is compatible with most major brand cameras and its ability to automatically search and find the available cameras on the network can greatly reduce the user effort when expanding the system.

Asoni NVR504B can be quickly and easily configured into your existing local IP network along with the IP cameras. Users can control, record, and view live videos right through a web browser from another PC on the network.



When you are on the road or travel away from your home or office, Asoni NVR504B gives you the same level of user experience as you are inside your home or office network.



Hardware Specification

CPU and Memory

- ▶ ARM9 300Mhz / 128MB DDR RAM

Ethernet

- ▶ 10BaseT / 100BaseT / 1000BaseT and half duplex / full duplex auto-negotiation

HDD

- ▶ SATA HDD Slot x 2 (SATA I or SATA II)
- ▶ Max. Capacity: 3TB (1.5TB per HDD)

Buttons

- ▶ Reset / Restart / Power

Connectors

- ▶ USB x 2

Power

- ▶ 12 DC/3A
- ▶ Power consumption: 36W

Dimensions

- ▶ 245 x 140 x 83 mm

Weight

- ▶ G.W. 3kg

Temperature

- ▶ Operating: 5 °C ~ 40 °C
- ▶ Storage: -20 °C ~ 70 °C

Humidity

- ▶ Operating : 10%RH ~ 80%RH
- ▶ Storage : 5%RH ~ 90%RH

Safety

- ▶ CE/FCC

Software Specification

Cameras

Model	Asoni, Axis, Panasonic, Sony Cameras
Add Camera	Manual / Smart Camera Search
Max. Channels	4

Network

Protocols	HTTP/SMTP/DHCP/ARP/NTP/DNS/UPnP/FTP
Streaming Protocol	Depend on the supported cameras

Video

Compression	MJPEG / MPEG-4 Part 2 / H.264
Resolution	HD / MegaPixel / Full-D1 / CIF / QCIF, or depends on camera
Max. Frame Rate	120fps (MegaPixel, H.264)

Live View

Display Mod	Live View / Playback / Full Screen
Split Screen	1 / 4
Full Screen	1 / 4
PTZ Support	Virtual PTZ Panel / Auto Pan / Preset Point / Preset Sequence
Sequence Mode	Sequence All / Manually Selected cameras in 1 or 4 split view with configurable timer
Snapshot	Video snapshot in JPEG format

Playback

Split Screen	1 / 4
Search Method	Time / Date, Event
Playback Controls	Play / Pause / Stop / Forward / Reverse / Speed Adjust / Frame by Frame

Recording

Capacity	Depends on hard disk
Recording Mode	Manual / Continuous / Scheduling / Event
Scheduling Types	Manual Select / Profile-based / Weekend Mode

User Management

Management	User / Group
Group Numbers	7 (Administrator / Guest / User Define x 5)
Privileges	Live View / Playback / System Configurations / Camera Configurations / Recording Configuration / Event Configuration / Maintenance

Triggers & Events

Events	System Events -- System Start / Shutdown, System Settings modified, Camera Settings Modified, Start Recycle, Disk Full Camera Events -- Motion/Sensor Detection
Event Actions	Mail / FTP/ Record
Event Recording	Pre / Post Event Settings

Logs

Log Type	Alert / Event / User Access
-----------------	-----------------------------

System

Minimal Requirements	CPU: Intel Pentium 4 or higher @ 2GHz RAM: 1GB or above Network: 100M Network Interface or above IE Browser version 7 or above
-----------------------------	---

General

Languages	English/Chinese/Japanese/Spanish/Italian
Packaging	NVR(HD NOT included)/ CD with Software tool / Power Adapter