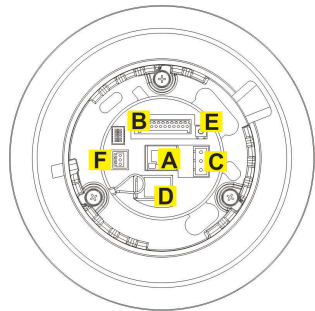


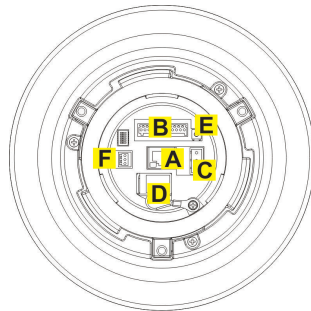
Full HD Speed Dome IP Camera Quick Guide

This Quick Guide is for quick installing and connecting the network Speed Dome IP Camera. For details, please refer to the camera's User Manual and Hardware Installation Guide.

Switch Definition



Indoor

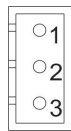


Outdoor

A	RJ-45 Connector
B	ALARM I/O
C	Power
D	Micro SD Card Slot
E	Factory Reset Button
F	Audio I/O

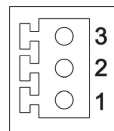
AC Power & Audio Connector Definition

AC Power Connector



Pin	Definition
1	AC 24_1
2	FG
3	AC 24_2

Audio Connector



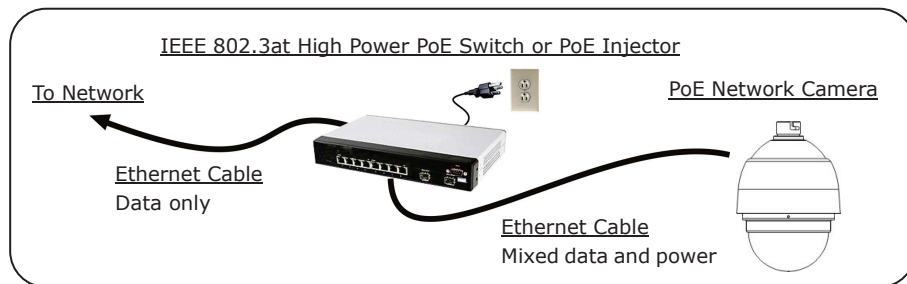
Pin	Definition
1	LINE_OUT
2	GND
3	LINE_IN



Please kindly check the pin definition of the AC Power Connector before connecting to the power source. The AC24V power source should be connected to the **first** and **third** pin. The unit might be damaged with wrong connection.

PoE Power Connection

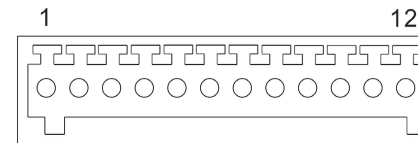
If the camera is PoE model, the power adapter is not necessary. The camera will get the power from the PoE injector or PoE switch. Please follow the below figure for the connection.



If there is a need to operate the Heater for Outdoor Models, please plug the AC 24V cable into the Camera's AC Power Connector to power up the Camera instead.

Alarm I/O Connector Definition

When cabling, please refer to the table below for pin definition of the Alarm I/O setting



Pin	Definition
1	ALARM_OUT_NO_1
2	ALARM_OUT_NC_1
3	ALARM_OUT_COM_1
4	GND
5	ALARM_OUT_NO_2
6	ALARM_OUT_NC_2

Pin	Definition
7	ALARM_OUT_COM_2
8	GND
9	ALARM_IN_4
10	ALARM_IN_3
11	ALARM_IN_2
12	ALARM_IN_1

Before Login to the Camera

A client program will be automatically installed on your PC when connecting to the network Speed Dome Camera. Before logging in to the Dome Camera, please ensure downloading the ActiveX control is allowed by either changing the ActiveX controls and plug-ins or setting Internet's security level to default. For further details, please refer to the network Speed Dome Camera's Software Guide.

ActiveX Controls and Plug-ins Settings	Internet Security Level
Step 1: Start the Internet Explorer (IE). Step 2: Select <Tools> from the main menu of the browser. Then click on <Internet Options>. Step 3: Click on the <Security> tab and select "Internet", and click on <Custom level> to change ActiveX settings. Step 4: Set "ActiveX controls and plug-ins" items to <Prompt> or <Enable>.	Step 1: Start the IE Internet Explorer (IE). Step 2: Select <Tools> from the main menu of the browser. Then click on <Internet Options>. Step 3: Click on the <Security> tab and select "Internet." Step 4: Down the page, click on <Default Level> and <OK> to confirm the setting. Close the browser window, and open a new one later for accessing the IP Camera.

Camera Login

The network Speed Dome Camera's default IP address is: **192.168.0.250**. Therefore, to access the camera for the first time, set the PC's IP address as: 192.168.0.XXX; for example:

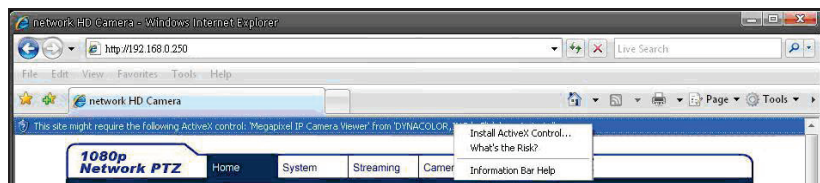
IP Address: 192.168.0.100
Subnet Mask: 255.255.255.0

Login ID & Password

- Key in the camera's IP address in the URL bar of the Web browser window and click on <Enter>.
- Enter the default user name (**Admin**) and password (**1234**) in the prompt request dialogue. Note that user name is case sensitive.

Install the ActiveX Control

- After connecting to the network Speed Dome Camera, the request for installing the ActiveX control will appear just below the URL bar.
- If you are using IE 11, click “Tool” icon (which is a gear wheel), and click “Compatibility view settings”. In the dialog box, add the current IP address and then click “OK”, this web page will be displayed properly.
- Right Click on the information bar, and click on “Install ActiveX Control...” to permit ActiveX control installation.



- In the pop-up security warning window, click on “Install” to start downloading DC Viewer software on the PC.
- Click on “Finish” after DC Viewer installation is complete.

Browser-based Viewer

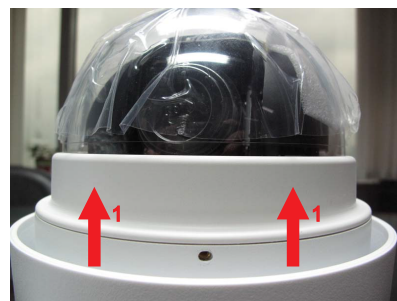
The main page of the network Speed Dome Camera user interface is as shown below.



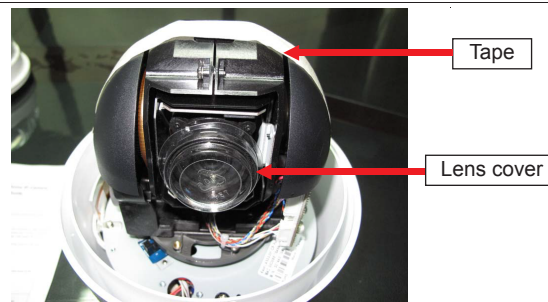
Full HD Speed Dome IP Camera Quick Guide



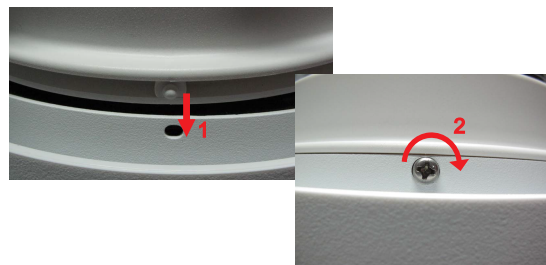
Before you connect the PoE or AC power to the speed dome camera, please follow the below instructions to take off the tape and cover on the lens.



1. Take off the cover from the body.



1. Take off the Tape and Lens cover.



1. Find the plastic stud by the side of cover, and insert into one of the slot at the body.
2. Use screw driver to fasten the screw(clockwise direction).