

Asoni



All in one Professional Recording Software

ALS-24N-S



- ▶ Manages / Record up to 72 IP Cameras
- ▶ Live view / Record / Playback / E-MAP
- ▶ Support 4U / 24-bay Hot-Swappable
- ▶ Up to 96TB total storage
- ▶ Support RAID 0, 1, 5, 10, 50 JBOD
- ▶ Support Redundant 1000W 1+1 power supply
- ▶ Integration with NVR and CMS
- ▶ Full remote control through Internet Explorer
- ▶ Supports major brands and Onvif IP camera
- ▶ Schedule / Event / Manual Recording

ALS-24N-S plus APV7000 professional recording software is a professional network surveillance solution, it can manage multiple IP cameras and video servers for live-view, record, playback, control, event notification and reaction.

This APV7000 recording software supports Asoni, the major brands and Onvif IP cameras and video servers, manages up to 72 channels in a single NVR server. The powerful ALS-24N-S combines normal and panorama cameras into one system, and can show Live view, Playback, Record, E-MAP functions in the same time on the single screen or multiple screens. It can make user to operate flexible.

For the CMS, user can integrate multiple NVR servers, which offers you the possibility to manage a large scale surveillance system, and live-view, playback, manages all cameras at the single platform.

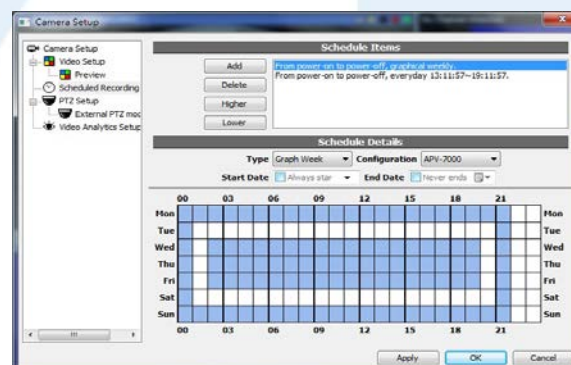
Live View

- Supports Full-HD monitor, UI display resolution up to 2592x1944
- Multiple monitors display: 6 for live-view, playback, E-MAP
- Various split windows viewing modes
- User-defined channel sequence and layout
- Supports 2-way audio
- Supports digital PTZ zoom-in
- Channel, event and system status monitor



Record

- Full-time, Schedule, Event and Manual recording
- Specific-schedule recording for special date / time
- Pre/ Post event recording: Pre-alarm / Post-alarm
- Multiple storages for recording
- Automatically overwrite when disk is full
- Independent recording database, easily for export



Asoni



All in one Professional Recording software

Playback

- 16 Multiple channels playback simultaneously
- Quickly select event video from event list
- Smart search recorded video by time list
- User-defined to search event from the browse channel
- Supports digital zoom
- Export recorded video as video clip or picture

E-MAP / Google Map

- Multiple layers of maps, provides tree-list for select map easily
- Live-view and instant event notification
- Various icons for identify the channel, and map
- Motion and alarm list for select and play the post event video
- Adjustable map size to fit the window

Panorama & Event

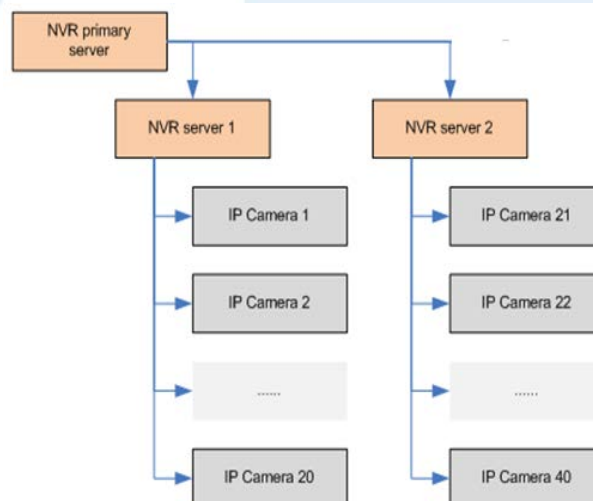
- Support H.264, MPEG4, MJPEG Compression format
- Multiple panorama modes for live view and playback
- Motion and digital input detection
- Various and multiple reaction when event is triggered:
Recording / E-mail / FTP notification / Play warning sound
/ Pop-up video/ Go to preset point

CMS Server Function

- Manages up to 64 NVR servers
- Live-view/ Playback from all connected NVR servers
- Receive notification from all connected NVR servers
- Direct configure connected NVR servers

Remote Access

- Fully remote access/ control by NVR Client program
- Fully remote access/ control via IE browser
- Remote live-view via iPhone, Andriod and other 3G mobile phone





All in one Professional Recording software

System Spec



The PC performance, brand of camera, camera's resolution and FPS, will affect the maximum simultaneous live-view channels.

Connecting Cameras	72 Channels of IP Cameras/ Video servers					
PC Specification	CPU: Intel Xeon E3 1230 V2 (Ivy Bridge) 3.3GHz					
	RAM: 8GB					
	Display Port: HDMI / DVI / VGA					
	Ethernet port: 1Giga-bit * 2 port					
	Hard Disk Drive <ul style="list-style-type: none"> ● System HDD: 2.5" SATA III 500G, File System: NTFS ● Storage HDD: 3.5" SATA III HDD x 24, up to total 96TB (4TB x 24) WD Se series HDD / WD Re series HDD are strongly recommended ● RAID Level: 0, 1, 10, 50 JBOD 					
Operating System: Windows 7 Professional 64-bit						
Resolution	CIF (320x240)	D1 (720x480)	1.3M (1280x1024)	2M (1600x1200)	3M (2048x1536)	5M (2592x1944)
Bitrate	H.264 512Kbps (CBR)	H.264 1Mbps (CBR)	H.264 1.5Mbps (CBR)	H.264 2Mbps (CBR)	H.264 4Mbps (CBR)	H.264 6Mbps (CBR)
Frame Rate	30 FPS	30 FPS	10 FPS	15 FPS	20 FPS	15 FPS
Simultaneous Recording Channels	Up to 72 CH	Up to 72 CH	Up to 72 CH	Up to 72 CH	Up to 72 CH	Up to 72 CH