



**All in one Professional Recording Software**

**NVR7000 series**

- ▶ Provides 1CH / 4CH / 9CH / 16CH / 25CH / 36CH / 49CH / 64CH / Pano versions
- ▶ Live view / Record / Playback / E-MAP
- ▶ Integration with NVR and CMS
- ▶ Full remote control through Internet Explorer
- ▶ Supports major brands and Onvif IP camera
- ▶ Schedule / Event / Manual Recording
- ▶ Supports multiple monitors display



NVR7000 series professional recording software is a professional network surveillance software, it can manage multiple IP cameras and video servers for live-view, record, playback, control, event notification and reaction.

This software supports Asoni, the major brands and Onvif IP cameras and video servers, manages up to 64CH (NVR7000-64), 49CH (NVR7000-49), 36CH (NVR7000-36), 25CH (NVR7000-25), 16CH (NVR7000-16), 9CH (NVR7000-9), 4CH (NVR7000-4), 1CH (NVR7000-1) in a single NVR server. The powerful recording software combine normal and panorama cameras into one system, and can show Live view, Playback, Record, E-MAP functions in the same time on the single screen. It can make user to operate flexible.

For the CMS, user can integrate multiple NVR servers, which offers you the possibility to manage a large scale surveillance system, and live-view, playback, manages all cameras at the single platform.

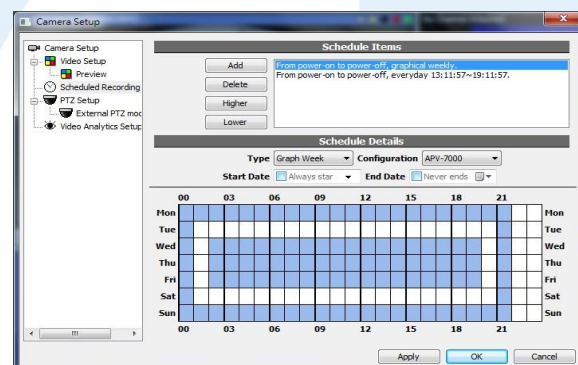
**Live View**

- Supports Full-HD monitor, UI display resolution up to 1920x1080
- Multiple monitors display: 6 for live-view, playback, E-MAP
- Simultaneous 64CH smooth live-view (with Asoni cameras)
- Various split windows viewing modes
- User-defined channel sequence and layout
- Supports 2-way audio
- Supports digital PTZ zoom-in
- Channel, event and system status monitor



**Record**

- Full-time, Schedule, Event and Manual recording
- Specific-schedule recording for special date / time
- Pre/ Post event recording: Pre-alarm / Post-alarm
- Multiple storages for recording
- Automatically overwrite when disk is full
- Independent recording database, easily for export





All in one Professional Recording software

**Playback**

- 25 Multiple channels playback simultaneously
- Quickly select event video from event list
- Smart search recorded video by time list
- User-defined to search event from the browse channel
- Supports digital zoom
- Export recorded video as video clip or picture

**E-MAP / Google Map**

- Multiple layers of maps, provides tree-list for select map easily
- Supports map-in-map function, easily monitors the status and switch the map
- Live-view and instant event notification
- Various icons for identify the channel, and map
- Motion and alarm list for select and play the post event video
- Adjustable map size to fit the window

**Panorama & Event**

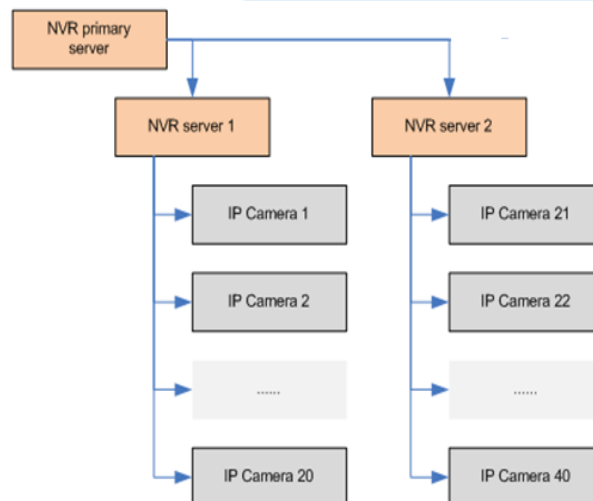
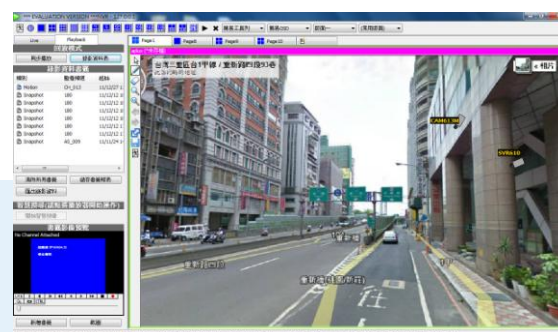
- Support H.264,MPEG4,MJPEG Compression format
- Multiple panorama modes for live view and playback
- Motion and digital input detection
- Various and multiple reaction when event is triggered:  
Recording / E-mail / FTP notification / Play warning sound / Pop-up video/ Go to preset point

**CMS Server Function**

- Manages up to 64 NVR servers
- Live-view/ Playback from all connected NVR servers
- Receive notification from all connected NVR servers
- Direct configure connected NVR servers

**Remote Access**

- Fully remote access/ control by NVR Client program
- Fully remote access/ control via IE browser
- Remote live-view via iPhone and other 3G mobile phone





## System Requirements

The following lists the recommended PC specification, please note:



The PC performance, brand of camera, camera's resolution and FPS, will affect the maximum simultaneous live-view channels.

Connecting Cameras	<b>10~36 channels of IP Cameras/Video servers</b>			
PC Specification	<b>CPU:</b> Intel I5-2500 3.3GHz			
	<b>RAM:</b> 4GB			
	<b>Display Card:</b> Independent display card with 1GB RAM on board, ATI or nVidia chipset is recommended, such as ATI-5450 or above			
	<b>Recording Hard Disk Drive</b> <ul style="list-style-type: none"> <li>● Internal: SATA II /III 7200rpm, File System: NTFS</li> <li>● External: DAS (Direct Attached Storage) connected via eSATA or USB 2.0/3.0 interface</li> <li>● Network: NAS (Network Attached Storage) connected via iSCSI interface</li> </ul>			
	<b>Operating System:</b> Windows 7 Professional or above			
	<b>Codec:</b> Must install CoreAVC (V3 or above,) into Windows			
Resolution	CIF (320x240)	D1 (720x480)	1.3M (1280x1024)	2M (1600x1200)
Bitrate	H.264 512kbps (CBR)	H.264 1Mbps (CBR)	H.264 1.5Mbps (CBR)	H.264 2Mbps (CBR)
Frame Rate	30 FPS	30 FPS	10 FPS	15 FPS
Simultaneous Recording Channels	Up to 36 CH	Up to 36 CH	Up to 36 CH	Up to 36 CH
Simultaneous Live-View Channels (with Asoni H.264 Camera)	Up to 36 CH	Up to 36 CH	Up to 36 CH	Up to 36 CH
Simultaneous Live-View Channels (with other brand H.264 Camera)	Up to 36 CH	Up to 25 CH	Up to 20 CH	Up to 14 CH