



8CH_Dual-Core powered Network Video Recorder

NVR8008L



- ▶ Linux-based standalone NVR, H.264 decoding
- ▶ Manage up to 8 IP cameras, Supports 5 Mega-pixel
- ▶ Real-time Display & Recording for all channels simultaneously
- ▶ Manual / schedule / Motion recording
- ▶ Support Dual video output to monitors simultaneously for local high resolution display
- ▶ USB3.0 connector connects to external storage
- ▶ Support HDD up to 12TB Max
- ▶ Fast transmission Network in Gigabyte LAN, Video Streaming input connection 100Mbps Bandwidth
- ▶ Remote client access through Web, Free CMS
- ▶ App "RealView Pro" for monitoring via Android / iOS smart phone

Specification

System

CPU / OS	Dual-core processor / Embedded Linux
Network port	Gigabit Ethernet x1, (10/100/1000Mbps adaptive)
Video Output	VGA x 1, HDMI x 1, up to 1920x1080
USB Connector	USB 2.0 x 1 (front) USB 3.0 x 1 (rear)
Record Storage	Internal Storage: SATA 3.0 port x 2,(up to 12TB total) External Storage: USB Disk
Network Protocol	HTTP, TCP/IP, IPv4, UPNP, SMTP, NTP, DHCP, DNS,DDNS, RTSP
Mouse Control	Yes
Authority Control	Password protection
System Monitor	Watchdog
Power Supply	DC 12V
Power consumption	40W
Dimensions	340 x 210 x 72 mm ;1.5U
Operating Temp.	-20~50°C
Humidity	10~90% RH (non-condensing)

Live View

Split Screen	1, 4, 8, 9,Full screen
PTZ Control	Yes ,via onvif
Digital Zoom	Yes
Privacy Mask	Yes
Channel Identify	Camera title, Time (adjustable position and color)

Playback and Backup

Playback Resolution	5M, 3M,1920x1080, 1600x1200, 1024x720, 720x480
Sync Playback	8 Ch Max
Search Mode	Date / Time , Event
Backup Mode	USB storage / Network

Event & Alarm System

Video Detection	Motion Detection , MD Zones: 396(22x18) / Video Loss
Trigger Actions	Recording / E-Mail / Alarm / Buzzer & Screen tips

IPcam Video

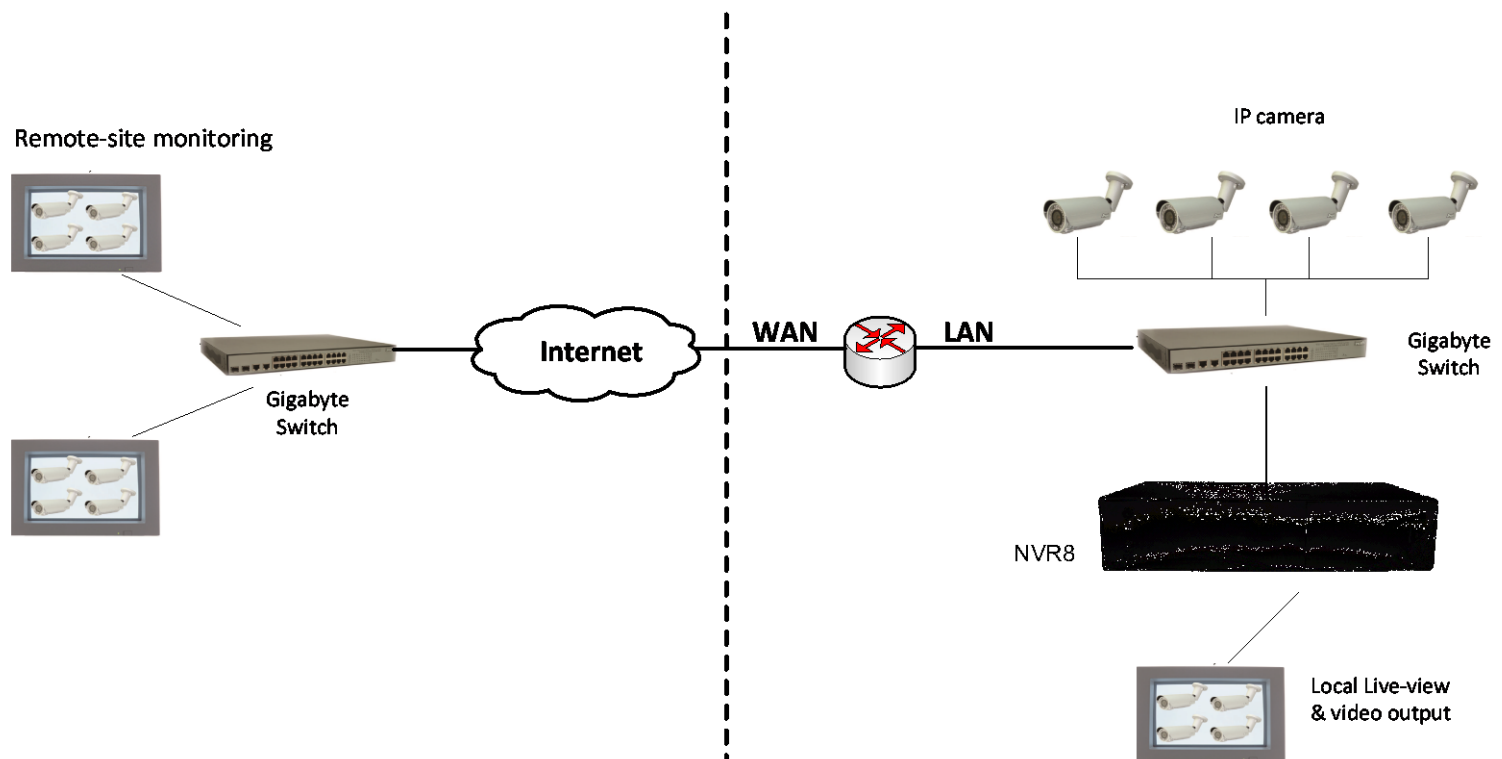
Channel	Max. 8 channels
Support IPCam	5M, 3M, 1920×1080, 1600×1200,
Resolution	1024×720, 720×480
Frame Rate	Up to 30FPS per channel

Recording

Record Format	H.264 video stream
Record Resolution	5M, 3M, 1920×1080, 1600×1200, 1024×720, 720×480
Record FPS	Depends on IP camera, up to 30FPS
Recording Bit Rate	128Kbps ~ 5Mbps per channel, Up to 50Mbps for total
Record Mode	Manual / Schedule / Motion detection
Pre / Post Recording	5~30 sec / 0~180sec
HDD Management	Assign HDD no. to Groups

Remote Client Access

Client Software	Windows PC: IE V7.0 (32-bit) or above Android / iOS smart phone: "RealView Pro"
Connected Users	Up to 32 Users
Remote Operation	Live view / Playback / Setup / Backup
PC Requirement	OS: Windows 7, Vista, XP
Suggested Hardware:	Intel Core 2 Duo 2.53GHz, RAM: 1GB

Connection Diagram

Preliminary