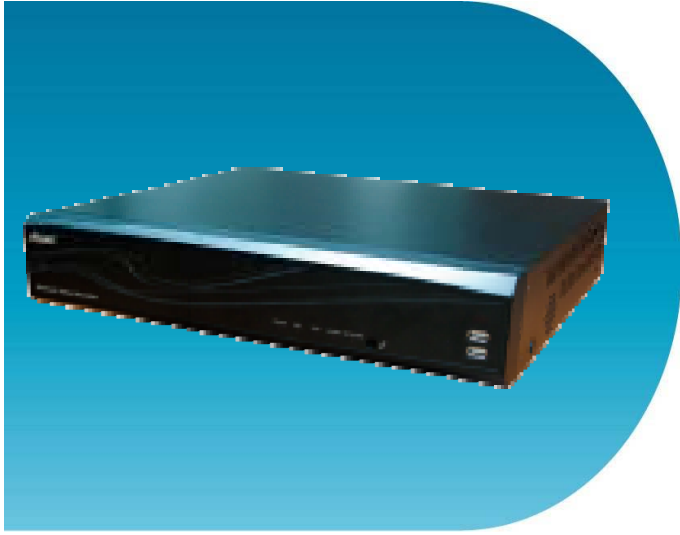




25 CH Full-HD Network Video Recorder

NVR6025LX



- ▶ Linux-based standalone NVR
- ▶ Manage up to 25 IP cameras
- ▶ Supports 5 Mega-pixel IP cameras
- ▶ Up to 750FPS, each channel@30FPS
- ▶ Manual / schedule / event recording
- ▶ Various types of event alerts
- ▶ Support time-point backup function under Ethernet remote control mode
- ▶ eSATA connector connects to external storage for expansion
- ▶ Remote client access and management
- ▶ Free App (wecam_p2p) for monitoring via Android / iOS smart phone

Specification

System

CPU / OS	Multimedia SoC / Embedded Linux
Network	Dual Gigabit Ethernet ports
Video Output	VGA x 1, HDMI x 1, up to 1920x1080
USB Connector	USB 2.0 x 2 (for mouse or USB storage)
eSATA Connector	eSATA x 1 (for external eSATA storage)
Audio Input	3.5mm jack to connect microphone
Audio Output	3.5mm jack to connect amplified speaker
Digital I/O	Digital Input x 8, Relay Output x 1
RS-485	terminal Block
Record Storage	Internal Storage: SATA HDD x 4,(up to 24TB total) External Storage: eSATA HDD x1, USB Backup Disk
Network Protocol	HTTP, TCP/IP, RTP/RTSP, 3GPP, SMTP, FTP, PPPoE, DHCP (Server & Client), DDNS, NTP, UPnP
Mouse Control	Yes
Authority Control	Password protection
System Monitor	Watchdog
Power Supply	DC 12V, 5A
Dimensions	W430 x H88 x D422 mm
Operating Temp.	0~45°C / 32~113°F
Humidity	0~80% RH (non-condensing)

Live View

Split Screen	1, 4, 9, 16,25, Full screen
Event Notification	On screen icon / buzzer notification
PTZ Control	Yes ,(CAM6_series preferred)
Digital Zoom	Yes
Privacy Mask	Yes
Channel Identify	Yes, Max. 20 characters for channel name

Playback and Backup

Search Method	Date / Time / Event, select from calendar
Log Search	Select video from Log table
Backup	Backup to USB storage

Event System

Event Trigger	Motion / Digital Input /Alarm / Video Loss
Trigger Actions	Recording / E-Mail / FTP / Buzzer Warning

Alarm Trigger Setup

Alarm Auto switch / Video Loss Detection / Digital Input (IPcam) / Ext. Alarm Detection / Ext. Alarm Mode / HDD Temp. Warning

Authority Control

HDD Format(password required) / Anonymous User Remote Login / Local User Login / Keyboard Lock / Auto Logout when Menu closed

Video / Audio

Channel	Max. 25 channels recording and display
Support IPCam	Up to 5 Mega-pixel 2592x1944 H.264, MJPEG compression mode
Frame Rate	Up to 30FPS per channel
Throughput	Up to 100Mbps
2-Way Audio	Hearing voice from IP camera Chatting or broadcasting to IP cameras

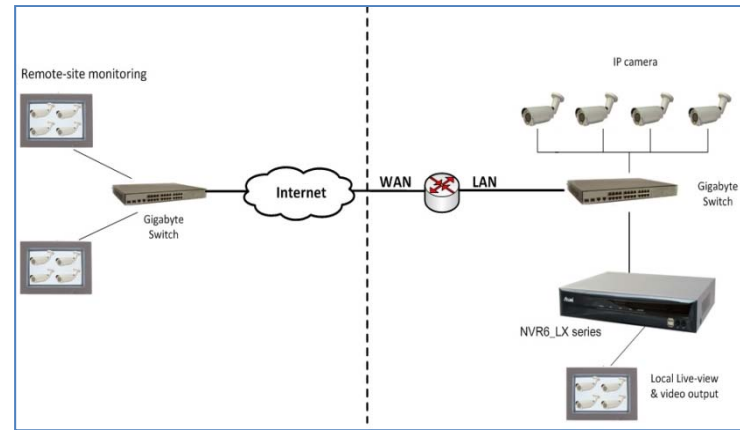
Recording

Record Format	H.264 video stream
Record Resolution	Depends on IP camera Up to 5 Mega-pixel 2592x1944
Record FPS	Depends on IP camera, up to 30FPS
Record Mode	Manual / Schedule / Event
Pre Recording	5~30 sec
HDD Management	Overwrite when HDD is full Auto delete after selected days

Remote Client Access

Client Software	Windows PC: IE V7.0 (32-bit) or above Android / iOS smart phone: "iCAM Smart"
Connected Clients	Up to 4 clients simultaneously
Remote Operation	Live view / Playback / Setup / Backup
PC Requirement	OS: Windows 7, Vista, XP Suggested Hardware: Intel Core 2 Duo 2.53GHz, RAM: 1GB

Connection Diagram



Preliminary