


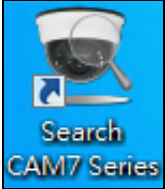
IP Search User's Guide

Install IP Search

"Asoni IP Search" is a utility that provides an easier, more efficient way to configure the IP address and network settings of the network camera in Local Network (LAN).

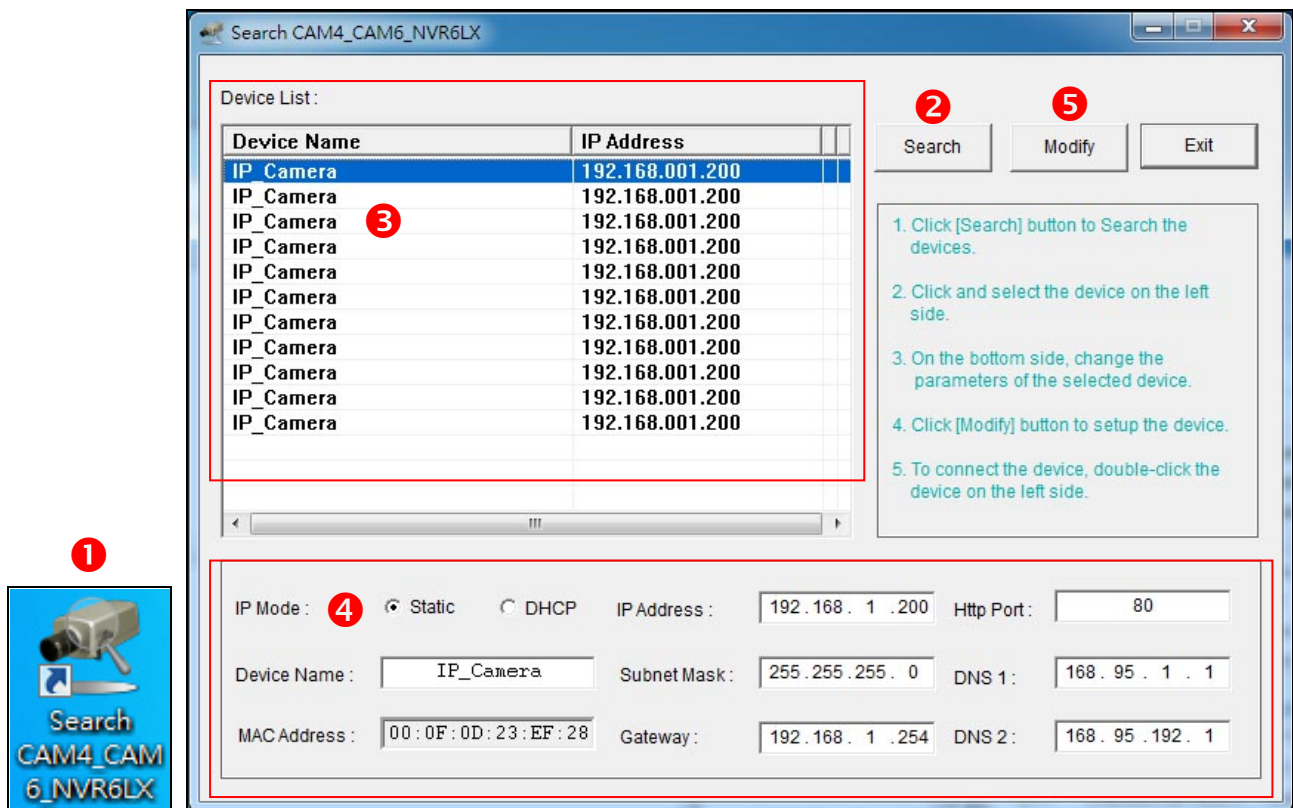
The software can be installed from the CD that bundled with IP camera, or download from our website.

Once "Asoni IP Search" has been successfully installed on the computer, you will see two new added icons on the desktop:

 The icon features a blue square background. At the top, there is a small image of a camera. Below it, the text "Search CAM4_CAM6_NVR6LX" is displayed in a stylized font.	<p>Search CAM4_CAM6_NVR6LX : This is the application to search CAM6xx series of IP camera.</p>
 The icon features a blue square background. At the top, there is a small image of a camera. Below it, the text "Search CAM7 Series" is displayed in a stylized font.	<p>Search CAM7 Series : This is the application to search CAM7xx series of IP camera.</p>

Assign IP Address for Asoni CAM6xx series IP Camera

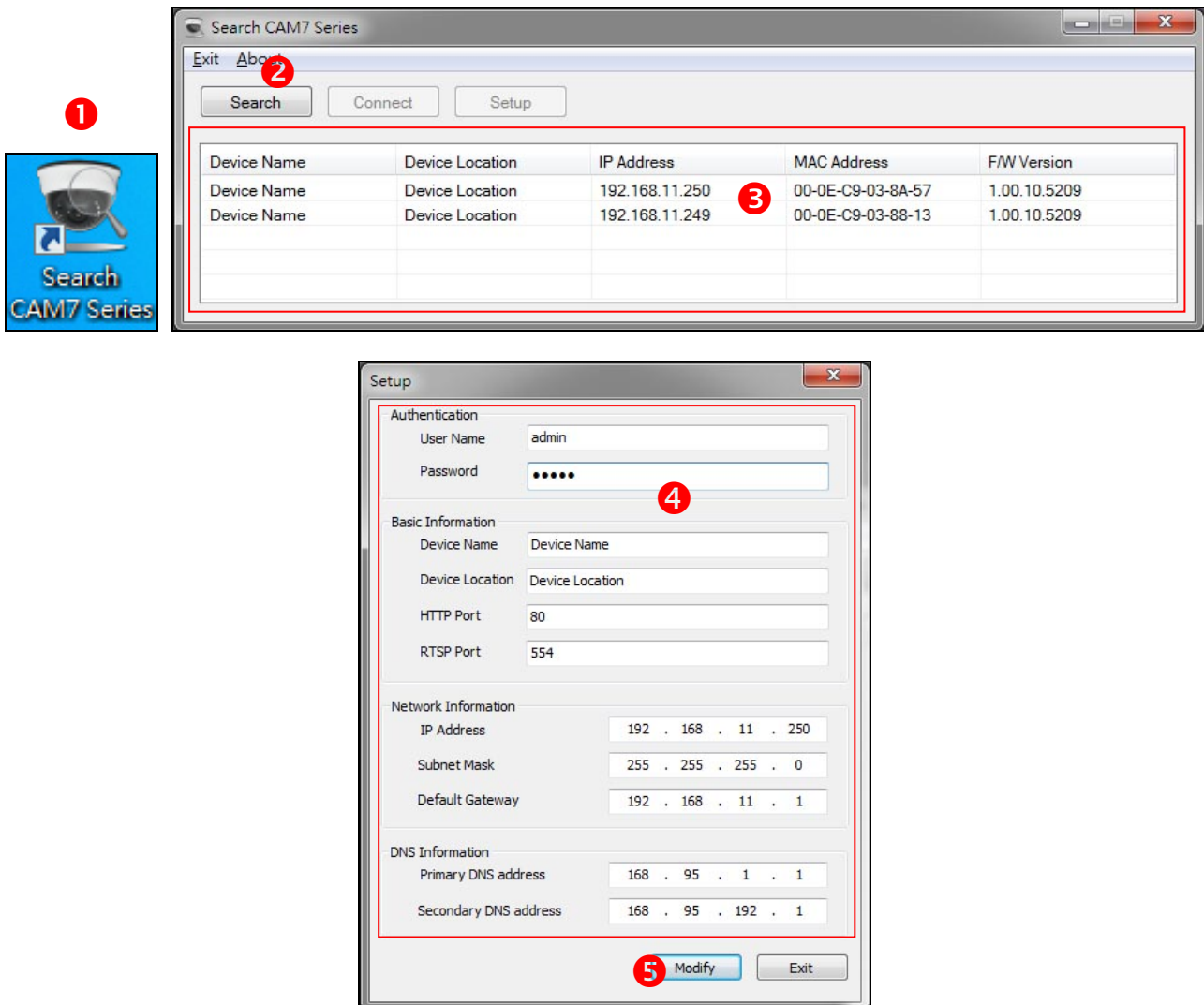
1. Once "Asoni IP Search" has been successfully installed on the computer, double click the "Search CAM4_CAM6_NVR6LX" icon on desktop.



2. IP Search searches all the network devices which connect to the intranet and lists on the window. Click **[Search]** button to search again.
3. From the list, click and select the device with the MAC Address that corresponds to the device that is to be configured.
4. The network configuration of the selected device will show on the bottom, filling in the Device Name, IP Address, Subnet Mask, Gateway and the others.
5. Click **[Modify]** button to save the settings into the device.
6. Wait for few seconds to let the device update the settings, and then click **[Search]** button again to re-search the network devices.
7. If you want to view the device with IE browser, double-click the network device listed on the window, it will open an IE browser and connect to this device directly.

Assign IP Address for Asoni CAM7xx series IP Camera

1. Once "Asoni IP Search" has been successfully installed on the computer, double click the "Search CAM7 Series" icon on the desktop.



2. IP Search searches all the network devices which connect to the intranet and lists on the window. Click **[Search]** button to search again.
3. From the list, click and select the device with the MAC Address that corresponds to the device that is to be configured, and then click **[Setup]** button, the network configuration of this device will be shown.
4. Input "**admin**" and "**admin**" in Username and Password fields, and then filling in the IP Address, HTTP Port, RTSP Port, Subnet Mask, Gateway and DNS.
5. Click **[Modify]** button to save the settings into the device.
6. Wait for one minute to let the device update the settings, and then click **[Search]** button again to re-search the network devices.

7. If you want to view the device with IE browser, double-click the network device listed on the window, it will open an IE browser and connect to this device directly.