

**Windows based, Rackmount**  
**All in one Professional**  
**Recording NVR System**



**ALS-8N-X**

- Intel i7
- up to  
**48 TB**  
Storage
- up to  
**72 CH**  
IP Cam
- RAID**
- Hot**  
Swap
- optional  
redundant  
**Power**
- Rack**  
Mount
- 1-Year**  
Warranty

**Product Overview**

[Software]

ALS-8N-X plus APV7000 profession recording software is a professional network surveillance solution, it can manage multiple IP cameras and video servers for live-view, record, playback, control, event notification and reaction.

This APV7000 recording software supports Asoni, the major brands and Onvif IP cameras and video servers, manages up to 72 channels in a single NVR server. The powerful ALS-8N-X combines normal and panorama cameras into one system, and can show Live-view, Playback, Record, E-MAP functions in the same time on the single screen or multiple screens. It can make user to operate flexible.

For the CMS, user can integrate multiple NVR servers, which offer you the possibility to manage a large scale surveillance system, and live-view, playback, manages all cameras at the single platform.

[Hardware]

ALS-8N-X is a reliable PC-based NVR server and designed for medium and large company. Users can get remote access easily, quickly and safely. The SAS(Serial Attached SCSI) technology is applied in the storage structure of ALS-8N-X, supporting data protection mechanism of RAID 0, 1, 5, 6 as well as Hot Spare. The Hot Swap function makes it possible executing HDD auto rebuilding while changing the damaged HDD.

**Features**

- ▶ Manages / Record up to 72 IP Cameras
- ▶ Live view/ Record/ Playback / E-MAP
- ▶ Built-in 4U / 8-bay Hot-Swappable HDD trays
- ▶ Up to 48TB total storage
- ▶ Support RAID 0, 1, 5, 6
- ▶ Built-in 500W power supply
- ▶ Optional redundant 500W power supply(1+1)
- ▶ Integration with NVR and CMS
- ▶ Full remote control via Internet Explorer
- ▶ Supports major brands and ONVIF IP cameras
- ▶ Schedule/ Event/ Manual Recording

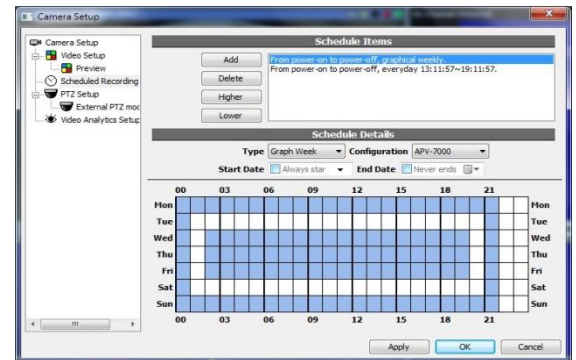
### Live View

- Supports Full-HD monitor, UI display resolution up to 2592x1944
- Multiple monitors display: 6 for live-view, playback, E-MAP
- Various split windows viewing modes
- User-defined channel sequence and layout
- Supports 2-way audio
- Supports digital PTZ zoom-in
- Channel, event and system status monitor



### Record

- Full-time, Schedule, Event and Manual recording
- Specific-schedule recording for special date/time
- Pre/ Post event recording: Pre-alarm / Post-alarm
- Multiple storages for recording
- Automatically overwrite when disk is full
- Independent recording database, easily for export



### Playback

- 16 Multiple channels playback simultaneously
- Quickly select event video from event list
- Smart search recorded video by time list
- User-defined to search event from the browse channel
- Supports digital zoom
- Export recorded video as video clip or picture



### E-MAP / Google Map

- Multiple layers of maps, provides tree-list for select map easily
- Live-view and instant event notification
- Various icons for identify the channel, and map
- Motion and alarm list for select and play the post event video
- Adjustable map size to fit the window



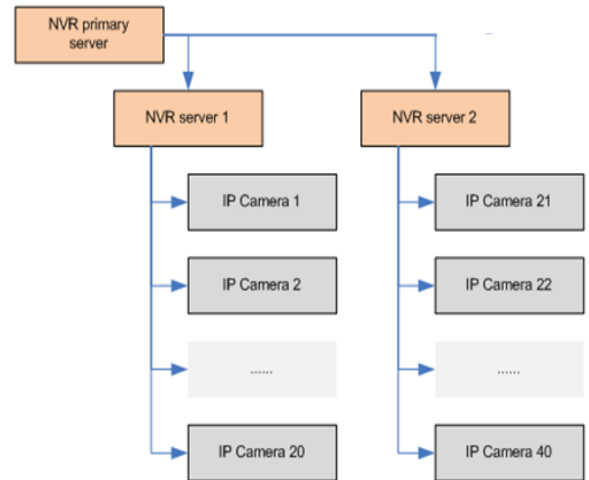
**Panorama & Event**

- Support H.264,MPEG4,MJPEG Compression format
- Multiple panorama modes for live view and playback
- Motion and digital input detection
- Various and multiple reaction when event is triggered:  
Recording/ E-mail / FTP notification/ Play warning sound  
/ Pop-up video/ Go to preset point



**CMS Server Function**

- Manages up to 64 NVR servers
- Live-view/ Playback from all connected NVR servers
- Receive notification from all connected NVR servers
- Direct configure connected NVR servers



**Remote Access**

- Fully remote access/ control by NVR Client program
- Fully remote access/ control via IE browser
- Remote live-view via iPhone, Andriod and other 3G mobile phone



The PC performance, brand of camera, camera's resolution and FPS, will affect the maximum simultaneous live-view channels.

Connecting Cameras	<b>72 Channels of IP Cameras/ Video servers</b>					
PC Hardware Specification	<b>CPU:</b> Intel® Core i7 ( Processor_number would vary for advancing with times )					
	<b>RAM:</b> DDRIII 8GB					
	<b>Display Port:</b> HDMI / DVI / VGA					
	<b>Ethernet port:</b> 1Giga-bit * 2 port					
	<b>Hard Disk Drive</b> <ul style="list-style-type: none"> <li>● <b>System HDD:</b> 2.5" SATA III 500G, File System: NTFS</li> <li>● <b>Storage HDD:</b> 3.5"SATA III HDD x 8, up to total 48TB (6TB x 8) ( WD Se series HDD / WD Re series HDD are strongly recommended )</li> <li>● <b>RAID card:</b> Adaptec 6805 , support RAID Level: 0, 1, 5, 6</li> </ul>					
<b>Operating System:</b> Windows 7 Professional 64-bit (En)						
Resolution	CIF (320x240)	D1 720x480)	1.3M (1280x1024)	2M (1600x1200)	3M (2048x1536)	5M (2592x1944)
Bitrate	H.264 512Kbps (CBR)	H.264 1Mbps (CBR)	H.264 1.5Mbps (CBR)	H.264 2Mbps (CBR)	H.264 4Mbps (CBR)	H.264 6Mbps (CBR)
Frame Rate	30 FPS	30 FPS	10 FPS	15 FPS	20 FPS	15 FPS
Simultaneous Recording Channels	Up to 72 CH	Up to 72 CH	Up to 72 CH	Up to 72 CH	Up to 72 CH	Up to 72 CH