



# APV7000-Pano

The new 5 megapixel experience in Panoramic Solution

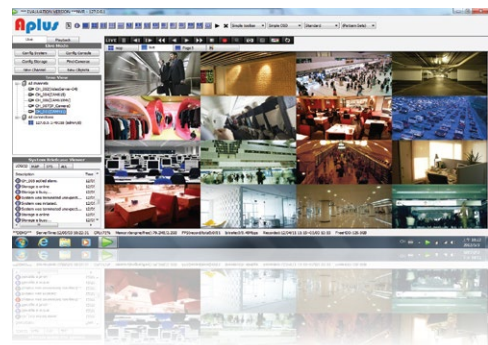


5 Mpx Panoramic Camera  
SW & HW Panoramic support  
Manage both Pano and normal IP cameras  
CMS solution included

Asoni APV7000-Pano is an optional version of APV7000 professional series. With APV7000-Pano, users can monitor 360° environment with panoramic IP cameras. In the mean time, this software allows users to monitor normal and panoramic IP cameras under the same screen. Users can choose among different views, in a combination of panoramic, rectilinear or cylindrical views.

## Software and Hardware Panoramic Support

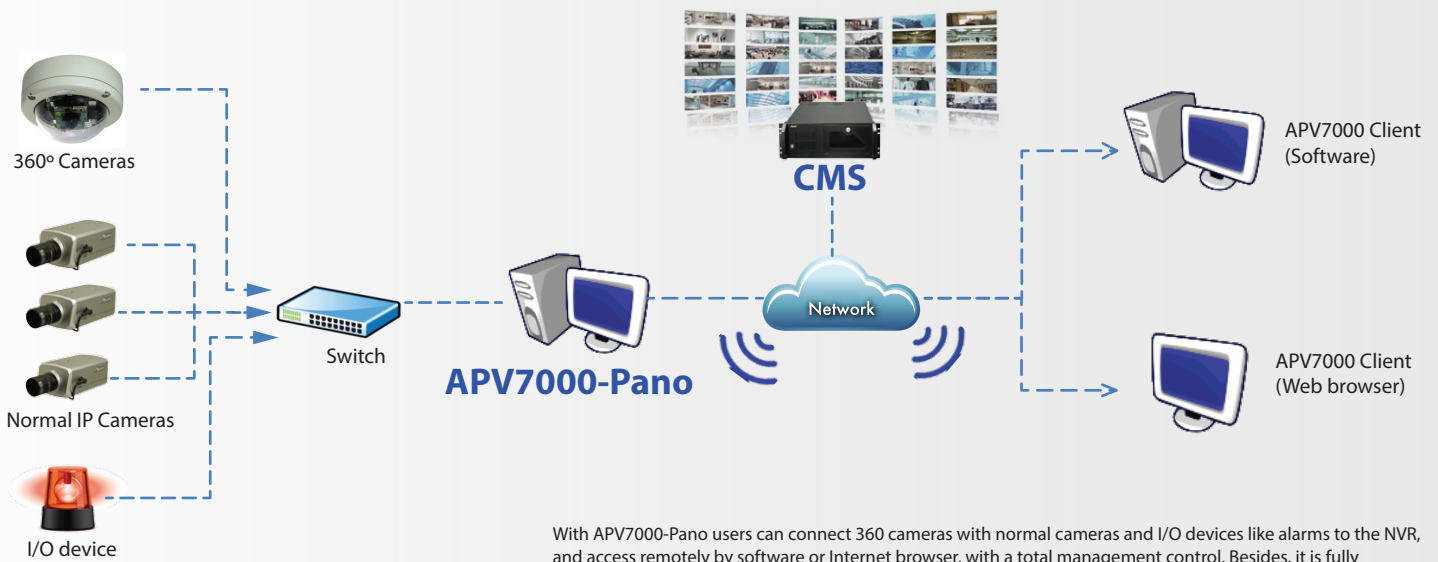
Most of the VMS support only hardware type panoramic function (where the whole image processing is done in the camera), but don't support software type. For those that only support software type, the surveillance functions are very limited. Asoni APV7000-pano supports both hardware and software types, offering the most comprehensive panoramic solution in the market.



## Key Features



- Ceiling mount 360° all surround view without blind spots
- Digital PTZ function with zoom in and focus on target. Surround view recording, no image is missing
- Quad view to show images from multiple different areas in one window.
- Automatically search IP camera by VMS, easy installation and operation
- Panoramic split views with combination of panoramic/rectilinear/cylindrical views
- Automatic disaster recovery of video data
- Instant playback up to 512x times with video search function
- Multi-core support suitable for performance demanding tasks
- Full remote control through Internet Explorer
- Multi-layer central management architecture
- Online configuration set-up system
- Graphical activity video display in real-time



With APV7000-Pano users can connect 360 cameras with normal cameras and I/O devices like alarms to the NVR, and access remotely by software or Internet browser, with a total management control. Besides, it is fully integrated with Asoni CMS, providing the highest flexibility and scalability that our customers need.

## Advantages



### Complete remote control

Never miss a detail with a complete remote control through APV7000 Client Software or APV7000 Web-based client. Access anytime, anywhere without limits.



### Multiple views layout

Choose among different views adapting to your needs: free, cylindrical, quad view, etc. Users can easily pan, tilt and zoom.



### Plug and play

Never was so easy to have a complete panorama system. Just connect your panoramic camera to Asoni NVR360 and start viewing the panoramic views without any extra installation or device.

## Supporting Cameras



	CAM6833EV	CAM619MV	CAM649MV - Outdoor	CAM636MV
<b>Definition</b>	5 Mpx	2 Mpx	2 Mpx	2 Mpx
<b>Image Sensor</b>	1/3.2" CMOS	1/3" CMOS sensor	1/3" CMOS sensor	1/3" CMOS sensor
<b>Lens</b>	1.25 mm	1.25 mm	1.25 mm	1.25 mm
<b>Day/Night ICR</b>	ICR	ICR	ICR	ICR
<b>Video Compression</b>	H.264 / MPEG4 / MJPEG	H.264 / MPEG4 / MJPEG	H.264 / MPEG4 / MJPEG	H.264 / MPEG4 / MJPEG
<b>Video FPS</b>	15 FPS (2592x1944)	15 FPS (1600x1200)	15 FPS (1600x1200)	15 FPS (1600x1200)
<b>Digital I/O</b>	1/1	1/1	1/1	1/1
<b>Two way audio</b>	Yes	Yes	yes	yes
<b>Micro SD card</b>	yes, for event recording	yes, for event recording	yes, for event recording	yes, for event recording
<b>Power</b>	DC 12V, PoE	DC 12V, PoE	DC 12V, PoE	DC 12V, PoE