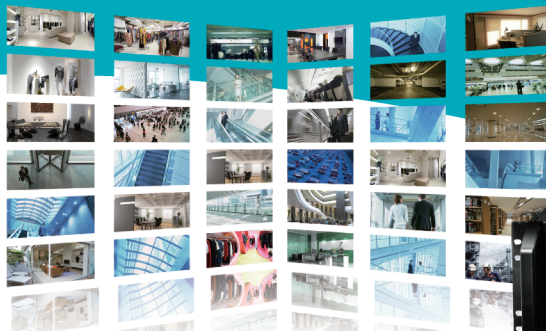




NVR7000

Robust and Reliable NVR Solution



Why NVR7000?

- Cost Saving
- Up to 64 channels
- 360 Solution included
- Customizable Interface
- Simultaneous display (64ch @15FPS)
- Reliable Embedded CMS

Asoni Standalone NVR7000 is a dedicated high megapixel recording and management system. With Asoni APV7000 professional VMS integrated, it provides a reliable and efficient platform for all kind of surveillance system. Asoni NVR7000 provides users intuitive and powerful monitoring tools, using a customizable interface to adapt to customer's needs.

With scalable hardware and CMS integrated, Asoni NVRs can support up to 64 recording channels, and manage more than 4,000 cameras and video servers. Our distributed client-server architecture, along with the fully integration with Asoni IP cameras and major 3rd party cameras complete a reliable and efficient solution.

Key Features

- Manage up to 64 Channels
- Panoramic Cameras support
- Customizable user interface
- HDD Bay for 5 SATA Disks (Total up to 15TB)
- Two-way audio
- Instant Playback in live view window
- Megapixel recording

- Support H.264/MPEG-4/MJPEG formats
- Playback with more than 512x speed
- Fully Remote Control
- 25 Channels simultaneous synchronized playback
- Time and event based search
- PTZ and speed control
- E-Maps with camera icons

Advanced CMS Function



- Client-server architecture in the same device.
- Supports up to 6 screens for advanced monitoring
- Asoni APV7000 CMS allows multiple operators and remote users to manage lots of cameras and NVR
- Manage more than 4,000 channels
- Video and message-based alarms from multiple NVR servers

Product Comparison

NVR7000(4-9 Channels)



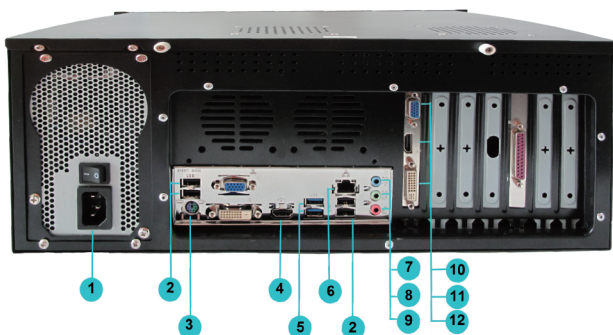
NVR7000(16-64 Channels)



Connecting Cameras	4/9 Channels of IP Cameras/ Video servers	16/25/36/64 channels of IP Cameras/ Video servers
Hardware style	Tower	Rack mount 4U
Dimensions (W x H x D)	54 mm x 47 mm x 36 mm	58.5 mm x 55 mm x 24.5 mm
Weight	10Kg / 22 lbs	11Kg / 24.25 lbs
CPU	Intel I3-2100 3.1GHz	Intel I5 3.3GHz
RAM	2 GB DDRIII	4GB DDRIII
Display Card	Independent display card with 1GB RAM	Independent display card with 2GB RAM
Removable HDD	3x SATAII	5xSATAII
External HDD	DAS (Direct Attached Storage) connected via eSATA or USB 2.0/3.0 interface	DAS (Direct Attached Storage) connected via eSATA or USB 2.0/3.0 interface
Operating System	Windows 7 Professional 64 bit or above	Windows 7 Professional 64 bit or above
	Codec: Must install "Intel Media SDK" or "CoreAVC" into Windows	Codec: Must install "Intel Media SDK" or "CoreAVC" into Windows
USB ports	USB 3.0, 2 ports USB 2.0, 4 ports	USB 3.0, 2 ports USB 2.0, 4 ports
Video Output	d-Sub, HDMI, DVI-I	d-Sub, HDMI, DVI-I
Simultaneous Live-View Channels (with Asoni H.264 Camera)	Up to 9 CH	Up to 64 CH
Simultaneous Live-View Channels (with other brand H.264 Camera)	Up to 9 CH	Up to 36 CH
Unified Solution	Fully compatible with Asoni Cameras and encoders	
Integration	Open Platform	

*The PC performance, brand of camera, camera's resolution and FPS, will affect the maximum simultaneous live-view channels

NVR Appearance



- ① AC Power input
- ② USB 2.0 Port x 4
- ③ PS/2 Keyboard/Mouse Port
- ④ HDMI output (CPU)
- ⑤ USB 3.0 Port x 2
- ⑥ LAN Port
- ⑦ Line-IN
- ⑧ Audio Line-Out
- ⑨ Microphone-In
- ⑩ Output Monitor 1&2 (D-Sub)
- ⑪ Output Monitor 1&2 (HDMI)
- ⑫ Output Monitor 1&2 (DVI-I)

