



APV7000

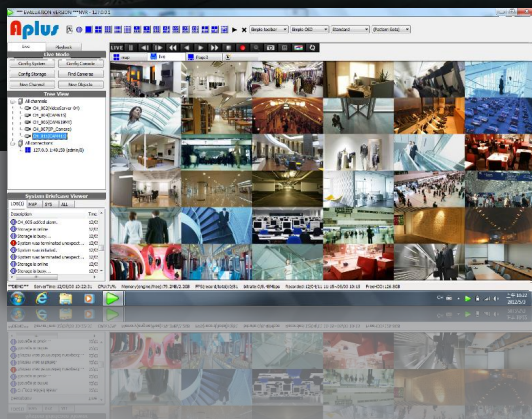
Video Management Solution

Panoramic function included

Embedded CMS

64 channel 2 Mega-Pixel live view without delay

Intelligent Video Analysis



APV7000 Video Management Software

TOTAL SOLUTION | Scalable IP solutions

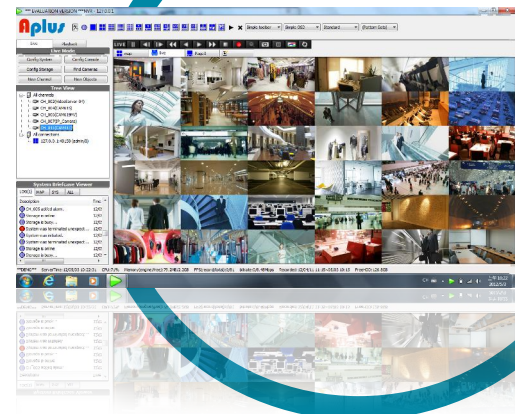
Asoni comprehensive Video Management Solution is scalable for any kind of project. With an embedded CMS, APV7000 is suitable not only for single site applications, but for multi-site and centralized solutions. Its flexibility and scalability empowers your relationship with customers by providing them all-in-one solution.

Why choosing APV7000 instead of other NVR

| | Most NVRs | APV7000 |
|--|-----------|---------|
| Flexible Interface | X | ✓ |
| Simultaneous display (up to 64ch @15FPS) | X | ✓ |
| 360 Solution included | X | ✓ |
| Reliable Embedded CMS | X | ✓ |
| Cost saving | X | ✓ |

Live view

User-friendly APV7000 interface makes customers easily monitor up to 64 cameras simultaneously (2Mega-Pixel @ 15FPS), drag and drop video source from Camera tree and select among different views in the layout panel.



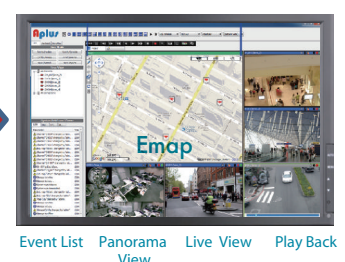
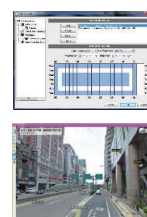
Panoramic Camera support. No missing points

Asoni APV7000 integrates normal and panoramic IP cameras to be displayed on live view or playback mode at the same time.

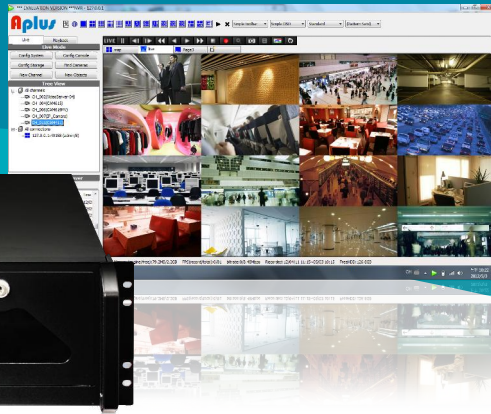
With APV7000 Pano functions users can pan, tilt and zoom in & out to select the desired area in both live view and play back condition.

Flexible interface for customizing

APV7000 allows users to adjust the user's interface layout, creating their own screen divisions and including independent playback, emaps or event schedule in the same window. Rather than other NVR, APV7000 users can monitor live-view while examining the incidents history.



Event List Panorama View Live View Play Back

Intelligent Video Analysis

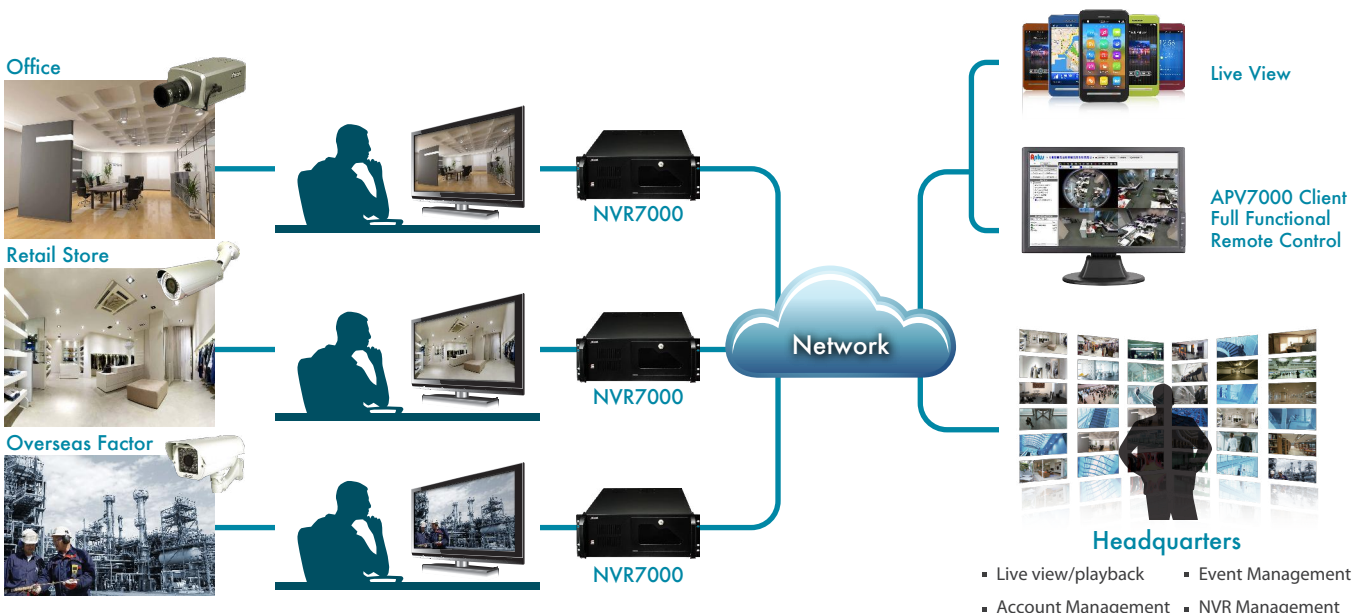
Asoni APV7000 provides real time IVS, featuring functions such as missing and foreign object detection, multiple polygon detection regions and camera tampering detection.

Embedded CMS & Remote Monitoring

Asoni APV7000 CMS allows multiple operators and remote users to manage large numbers of cameras and NVRs. It is suitable for multi-site installations such as banks or multiple branch offices.

Supports up to 6 monitors which can be easily configured to provide dedicated displays for multiple view, eMAPs and alarm notification.

The CMS, APV7000 software Client and APV7000 Web-based client have the same interface, so users can access all functions without having to learn different software.



Playback

Instant synchronized playback in live view window with the fastest playback speed (more than 512x)

eMaps

APV7000 e-Map function provides a comprehensive overview of an entire surveillance installation, allowing users to edit maps and choose arbitrary location and angle of a camera icon which provides camera status in real time.

Alarm & Events

System alarms ensure immediate detection of problems with cameras, servers and other devices. Advanced event management allows users to activate a response by events or motion detection.

APV7000 Software Solution Overview

APV7000 Professional

General

| | |
|---------------------------|--|
| Open platform | Support major brand cameras |
| Maximum Number of Clients | Unlimited |
| Maximum Number of Cameras | 64 |
| Free license | 0 |
| Compression | H.264, MPEG-4, MJPEG |
| Language | Multi language support |
| Panoramic Camera Support | Yes |
| CMS Integration | Management with integrated security across multiple NVR servers. |

Live view

| | |
|-----------------------------|--|
| Display Layout mode | 1, 4, 5, 6, 8, 9, 10, 12, 13, 16, 25,36, 49, 64 |
| Manual Recording / Snapshot | Instant recording or snapshot upon mouse click |
| Event panel | Display Event status upon alarms, connection loss, etc. |
| Two-way audio | Audio sound from and to all the audio supported devices |
| Dual Stream Management | Live view from stream 1 or stream 2 of dual stream devices |
| On screen digital zoom | Zoom in/out by mouse scroll wheel or by zoom control buttons |
| Instant playback | In live view window |

PTZ

| | |
|---------------------|--------------------------------|
| PTZ Control | Pan, tilt, zoom, speed control |
| PTZ Presets | Yes |
| Digital PTZ Control | Yes |
| Joystick | USB based joystick supported |

Search & Playback

| | |
|---|--|
| Audio/video synchronized playback | yes |
| Multi-channel synchronized playback | Yes |
| Time based Video Search | Yes |
| Event based video search | Yes |
| Smart Search | By Missing object, foreign object, etc.. |
| Playback control | Playback control with speed up to 512x |
| Snapshot | Instant recording or snapshot upon mouse click |
| Digital Zoom | Zoom in/out by mouse scroll wheel or by zoom control buttons |
| Video export | Audio/video synchronized export to AVI or Raw format |
| MPEG-4/H.264 frame by frame backward playback | Yes |

Recording

| | |
|------------------------|---|
| Scheduled Recording | Record video upon user defined schedule |
| Event Recording | Record video when events happen |
| Manual Recording | Instant recording |
| Dual Stream Management | Recording of stream 1 or 2 of dual stream devices |

Event Management

| | |
|--------------------|-----|
| Event trigger | Yes |
| Event Response | Yes |
| Manual Event | Yes |
| Email notification | Yes |

Remote Access

| | |
|-----------------------|---|
| Remote Web Brower | Users can access via internet browsers (IE, Safari, Chrome, Firefox) to live view, Playback, set up |
| Remote Client program | User program with live view, PTZ, playback event management, set up |
| Remote 3GPP | Users log in with 3GPP supported mobile phones |

e-MAP

| | |
|--------------------------|--|
| EMAP | Allows users to edit map and choose arbitrary location and angle of a camera icon. |
| PTZ control on emap | Resizing and rotating on mouse control. |
| DI/DO on Emap | Showing real-time status and provides direct GUI control. |
| External map integration | yes |

IVS

| | |
|---|---------------------|
| Motion Detection | yes |
| Tamper detection | yes |
| Double-tripwire directional object counting | Intelligent version |
| Foreign object alarm/detection | Intelligent version |
| Missing object alarm/detection | Intelligent version |
| IVS report | Intelligent version |



Asoni Communications Co., Ltd.

Tel: +886 2 2978 2778 Fax: +886 2 2978 1318